



**Aircraftplugs®**

Producer of ground power connectors



**Connect with confidence**  
**Disconnect in safety**

**Aircraftplugs®**

Kruisboommolestraat 7/9  
Industrialpark strohof - B-8800 Roeselare  
BELGIUM

Tel: +32-51.77.99.19 - FAX : +32-51.79.02.53 - AOG Hotline : +32.491.152.980  
info@aircraftplugs.com      www.aircraftplugs.com

Connect with Confidence, Disconnect in Safety with Aircraftplugs®

Aircraftplugs® manufactures aircraft and helicopter power connectors Worldwide deliveries

#### Aircraftplugs advantages

- minimum structure for maximum efficiency
- strategic locations around the world and fast distribution
- hi-tech production equipment
- orders tailored to the customer's needs
- competitive prices
- expansive international reputation and no-nonsense style
- Every delivery comes with the technical data sheets and certificates
- Performance and dimensions to Mil spec, ISO, and appropriate MOD (Air)and NSN Standards



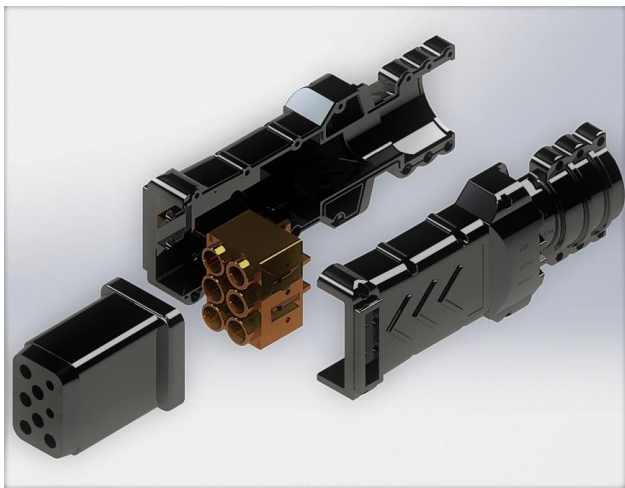
Your green, reliable partner in Aviation Connectors

 Aircraftplugs®



## ABOUT US

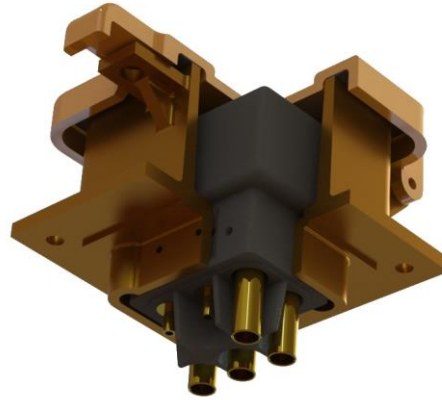
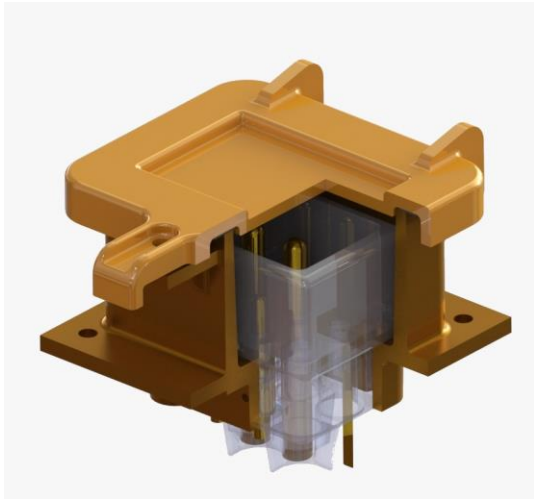
- Aircraftplugs, develops, tests and manufactures battery connectors, DC and AC 400 Hz. connectors and assemblies for the aeronautical industries. (Airports, Handling companies, Airlines and private users.)
- Deliveries throughout Europe and the rest of the world are prompt and right on time.
- Aircraftplugs is a Belgium based company established in 1997 and started with the mass production in 2007. We managed to increase business together with the expansion of the production facilities, warehouses and up-to-date testing facilities in a short period of time.
- We stand for top quality products, client first service and worldwide on-time deliveries.
- With over 25 years of experience in the airline industry.
- We do have a 6000 m<sup>2</sup> productions site, with state of the art CNC machinery and own testing facilities. Own molding and injection machines.
- More than 100.000 connectors in stock at all times.



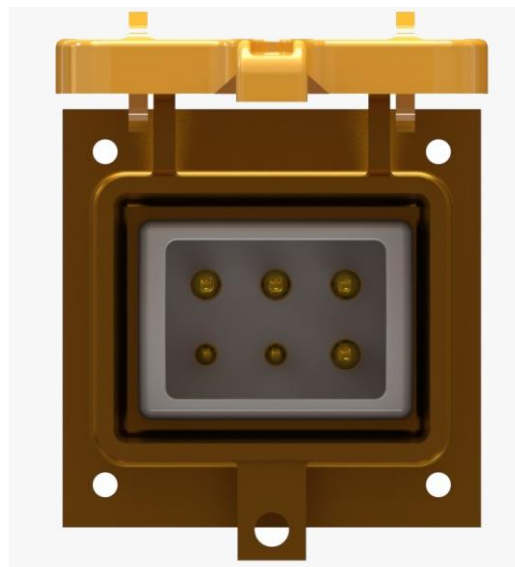
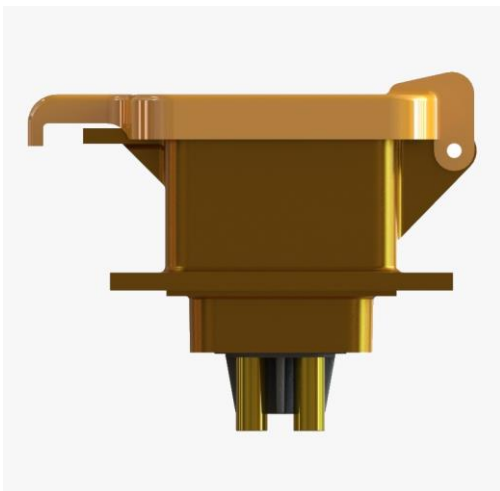
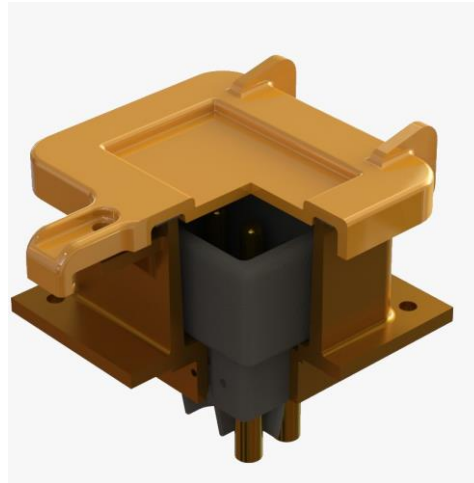


Testimonial from Jonathan Sisk, Founder & CEO , AudioAuthority

"Our global search for the best connector for our aviation ground power units led us to AircraftPlugs. All of our efforts to provide stable, clean airframe power ultimately depends on a solid, reliable connection to the aircraft. That's why we use AircraftPlugs connectors exclusively for our GPUs... the best quality, the best value, and a reliable business partner for 8 years now."



28VDC – 400 Hz sockets – receptacles available in stock | Optional in own color





## NATO LISTED PARTS AIRCRAFTPLUGS

Many Aircraftplugs connectors are NATO listed.

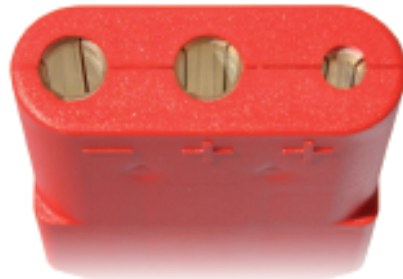
Our CAGE code : B7787

Our latest approved NATO parts is ACP6PR1 : NSN number 1225070.

Our connectors are according to Mil Specs MS25182, MS3509, Mil-PRF-18148, Mil-E-18148, Mil-E-81099, AN2551 and MS specs.

For specific NATO NSN listed parts ask [sales@aircraftplugs.com](mailto:sales@aircraftplugs.com)

A NATO Stock Number, or National Stock Number (NSN) as it is known in the US, is a 13-digit numeric code, identifying all the 'standardized material items of supply' as they have been recognized by all NATO countries including United States Department of Defense. Pursuant to the NATO Standardization Agreements, the NSN has come to be used in all treaty countries. However, many countries that use the NSN program are not members of NATO, e.g. Japan, Australia and New Zealand.



## Contents

|  |  |
|--|--|
| Aircraftplugs® INDEX .....   |  |
| Aircraftplugs® AN2551 .....  |  |
| Aircraftplugs® 3-POLE 28VDC .....  |  |
| Aircraftplugs® Rubber 6-POLE 400Hz .....   |  |
| Aircraftplugs® 12 Volt piper plugs .....   |  |
| Aircraftplugs® Receptables .....   |  |
| Aircraftplugs® Portable Receptables .....  |  |
| Aircraftplugs® 6-POLE replaceable contacts with leds   thermal control   switche ..... |  |
| Aircraftplugs® 400Hz Cables .....  |  |
| Aircraftplugs® MIL-DTL connectors .....  |  |
| Conversion table .....   |  |

See our Website [www.aircraftplugs.com](http://www.aircraftplugs.com) for latest updates.



## PROPERTIES

450 A continuous , 1500 A for 1 minute, control contact 35 A continuous.  
 Mates with the AN2552-3A external power receptacle.  
 Performance and dimensions to ISO 461 (BS4G173:1985) and appropriate MOD (Air) and NSN Standards.  
 Cable assemblies to client requirements available.  
 Max. wire 120mm<sup>2</sup> or 4/0 AWG 250 MCM.  
 Stainless steel screws.  
 Do not use unattended, standard AN2551 plug with cable is recommended.

## PARTNUMBERS

| PLUG PART | Configuration                                      |
|-----------|--|
| ACPJ&P    | Complete plug & jump universal model.              |
| ACPJ&P-A  | plug & jump universal model housing.               |
| ACPJ&P-B  | plug & jump universal model aux contact.           |
| ACPJ&P-C  | plug & jump universal model main contact           |
| ACPJ&P-D  | plug & jump universal model with crocodile clamps. |
| ACPJ&P-P  | plug & jump piper model                            |




**PROPERTIES**

450 A continuous , 1500 A for 1 minute,  
 Mates with the piper external power receptacle.  
 Cable assemblies to client requirements available.  
 Do not use unattended, standard Piper plug with cable is recommended.

**PARTNUMBERS**

| PLUG PART | Configuration                                      |
|-----------|--|
| ACPJ&P    | Complete plug & jump universal model.              |
| ACPJ&P-A  | plug & jump universal model housing.               |
| ACPJ&P-B  | plug & jump universal model aux contact.           |
| ACPJ&P-C  | plug & jump universal model main contact           |
| ACPJ&P-D  | plug & jump universal model with crocodile clamps. |
| ACPJ&P-P  | plug & jump Piper model                            |

# Aircraftplugs® AN2551 Connectors



## GENERAL - ADVANTAGES

- Ergonomic and high impact resistance, polycarbonate external power connector.
- 3 PIN NATO AN2551 external power connector for 12V / 24V or 28VDC application
- Patented connector worldwide in usage.
- Mates with AN2552 receptacle.
- Black rubber variant available see p12.
- Quality durable silver plated contacts.

## PROPERTIES

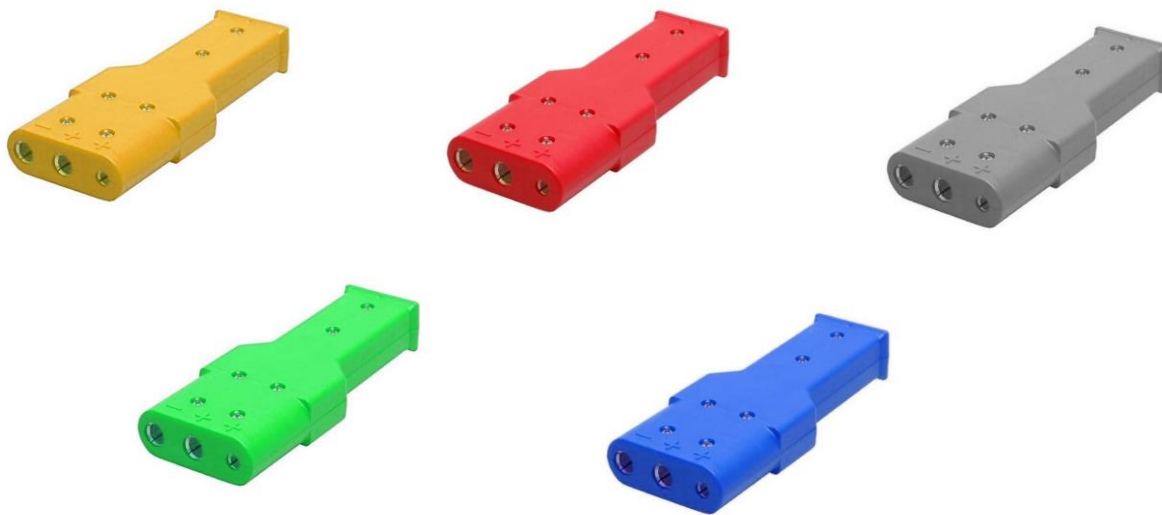
Hardness 13800psi, max. recommended cable for '0' AWG (50 mm<sup>2</sup>) .  
 Mates with the Aircraftplugs AN2552-3A external power receptacle.  
 Performance and dimensions to ISO 461 (BS4G173:1985) and appropriate MOD (Air) and NSN Standards.  
 Cable assemblies to client requirements available.  
 Recommended wires : 25mm<sup>2</sup> or 2 AWG.  
 240A continuous, peak 1500 Amps, control contact 35 A continuous.

## PARTNUMBERS

| PART NUMBER |   |
|-------------|---|
| AN2551      | Complete plug AN2551.   |
| AN2551-F    | Set of 2 main contacts and relay contact.   |
| AN2551-C    | Set of 2 main contacts pure copper silver plated with spring system.                |
| AN2551-L    | Relay contact with switch with cables.  |
| AN2551-M    | Relay contact with split contact and cables.  |
| AN2551-N    | Relay contact with internal spring.   |
| AN2551-P    | Polycarbonate cover. (no holes)   |
| AN2551-O    | Polycarbonate cover red with holes.   |
| AN2551-S    | Set of 6 stainless steel screw.   |
| AN2551-A    | Assembly of AN2551 connector with 2 meters (7 feet) 25mm <sup>2</sup> cable. (4AWG) |
| AN2551-B    | Assembly of AN2551 connector with 2 meters (7 feet) 35mm <sup>2</sup> cable. (2AWG) |
| AN2551-D    | Assembly of AN2551 connector assembly with crocodile clamps. (2 meters   7 feet).   |

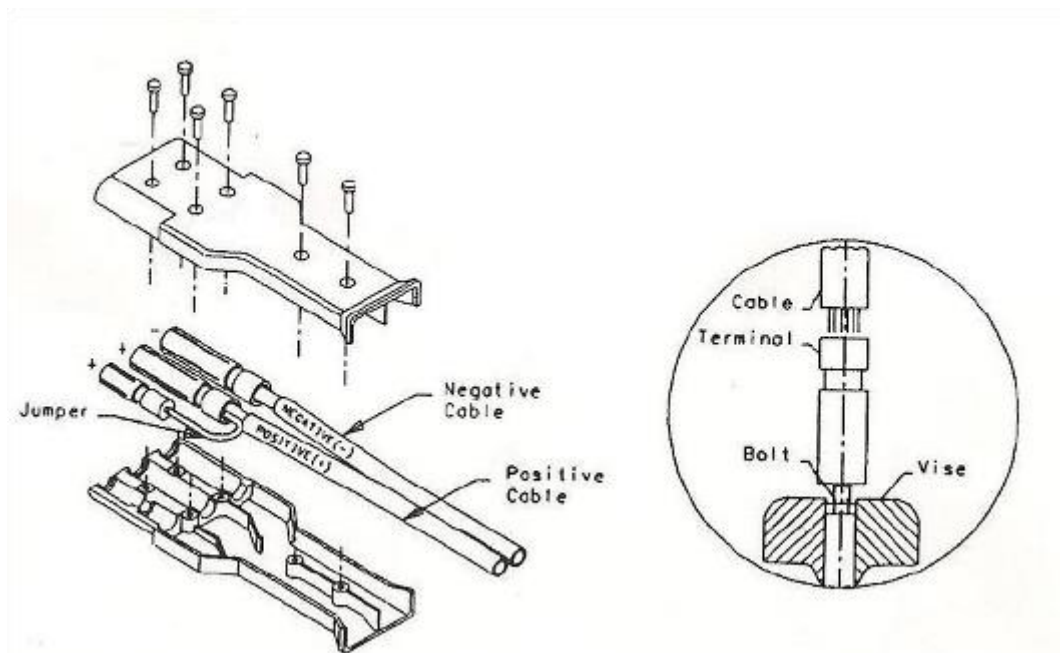


# Aircraftplugs® AN2551 Connectors



## TAILOR MADE

You want to give your ground power unit its own special look and feel.  
You're looking for a custom made to order color. You can work with our color experts to choose





## GENERAL - ADVANTAGES

Designed and manufactured by Aircraftplugs® Worldwide usage. (Patented connector)  
 3 poles – 28VDC external power female 3 poles rubber plug for aircraft and helicopters.  
 Made to Mil-C-7974 standards ,MS25488  
 Mil-C-5756 electrical cable it is meeting the MS90347 specification.  
 The 3 poles DC Aircraftplugs® is a robust and durable connector.  
 Sleeves are machined solid copper, silver plated.  
 Special cable sizes and configurations on request.

## PROPERTIES

450 A continuous , 1500 A for 1 minute, control contact 35 A continuous.  
 Mates with the Aircraftplugs AN2552-3A external power receptacle.  
 Performance and dimensions to ISO 461 (BS4G173:1985) and appropriate MOD (Air) and NSN Standards.  
 Cable assemblies to client requirements available.  
 Max. wire 120mm<sup>2</sup> or 4/0 AWG 250 MCM.  
 Stainless steel screws.

## PARTNUMBERS

| PLUG PART | MIL. PART  | CABLE section                                  | GRUMMET | RECEPTACLE |
|-----------|------------|--|---------|------------|
| ACP3P1    | -          | 8mm <sup>2</sup> #8/2                          | ACP3P1G | ACP3R1     |
| ACP3P2    | -          | 35mm <sup>2</sup> 2-1/0                        | ACP3P2G | ACP3R2     |
| ACP3P3    | MS25488-25 | 50 mm <sup>2</sup> 2-1/0                       | ACP3P3G | ACP3R3     |
| ACP3P4    | MS25488-26 | 70 mm <sup>2</sup> 2-2/0 single conductor      | ACP3P4G | ACP3R4     |
| ACP3P5    | -          | 70 mm <sup>2</sup> 2-2/0                       | ACP3P5G | ACP3R5     |
| ACP3P6    | -          | 90 mm <sup>2</sup> 2-3/0                       | ACP3P6G | ACP3R6     |
| ACP3P7    | MS25488-27 | 120 mm <sup>2</sup> 2-4/0 single conductor     | ACP3P7G | ACP3R7     |
| ACP3P8    | -          | 120 mm <sup>2</sup> 2-4/0 oval twin conductor  | ACP3P8G | ACP3R8     |
| ACP3P9    | -          | 120 mm <sup>2</sup> 2-2/0 welding single cond. | ACP3P9G | ACP3R9     |

**ACP3P – A**

Designed and manufactured by Aircraftplugs® Worldwide usage. (Patented connector)  
 3 poles – 28VDC external power female 3 poles rubber plug for aircraft and helicopters.  
 Made to Mil-C-7974 standards ,MS25488  
 Connected to Mil-C-5756 electrical cable it is meeting the MS90347 specification.  
 The 3 poles DC Aircraftplugs® is a robust and durable connector.  
 Sleeves are machined solid copper, silver plated.  
 Special cable sizes and configurations on request.  
 Separated contact to AUX pole available.  
 Split pin configuration optional.


**PARTNUMBERS**

| PLUG PART | MIL. PART  | CABLE section                                  | GRUMMET   | RECEPTACLE |
|-----------|------------|--|-----------|------------|
| ACP3P1-A  | -          | 8mm <sup>2</sup> #8/2                          | ACP3P1G-A | ACP3R1-A   |
| ACP3P2-A  | -          | 35mm <sup>2</sup> 2-1/0                        | ACP3P2G-A | ACP3R2-A   |
| ACP3P3-A  | MS25488-25 | 50 mm <sup>2</sup> 2-1/0                       | ACP3P3G-A | ACP3R3-A   |
| ACP3P4-A  | MS25488-26 | 70 mm <sup>2</sup> 2-2/0 single conductor      | ACP3P4G-A | ACP3R4-A   |
| ACP3P5-A  | -          | 70 mm <sup>2</sup> 2-2/0                       | ACP3P5G-A | ACP3R5-A   |
| ACP3P6-A  | -          | 90 mm <sup>2</sup> 2-3/0                       | ACP3P6G-A | ACP3R6-A   |
| ACP3P7-A  | MS25488-27 | 120 mm <sup>2</sup> 2-4/0 single conductor     | ACP3P7G-A | ACP3R7-A   |
| ACP3P8-A  | -          | 120 mm <sup>2</sup> 2-4/0 oval twin conductor  | ACP3P8G-A | ACP3R8-A   |
| ACP3P9-A  | -          | 120 mm <sup>2</sup> 2-2/0 welding single cond. | ACP3P9G-A | ACP3R9-A   |



## REPLACEMENT NOSE SECTIONS - ADVANTAGES

The new 28VDC Replaceable Contact Section from Aircraftplugs is specially designed with a tapered edge to fit securely on any aircraft on the market today that utilizes 28VDC / 24VDC power.

A highly durable composite , nylon selected for its strength, durability and longer life.

It fit all aircraft types with a DC external power receptacle.

The replacement will increase the life of cables even longer by allowing the nose cap to be easily replaced.

Main advantages :

- Increases safety on the ramp.
- Extend the life of your connectors.
- Will reduce maintenance cost.
- Construction screws together in minutes.

## PARTNUMBERS

| PLUG PART |   |
|-----------|---|
| ACP3PNS-B | 28VDC Rubber connector with Blue contact section in composite   |
| ACP3PNS-R | 28VDC Rubber connector with Red contact section in composite    |
| ACP3PNS-G | 28VDC Rubber connector with Green contact section in composite  |
| ACP3PNS-Y | 28VDC Rubber connector with Yellow contact section in composite |



## GENERAL - ADVANTAGES

- 4,5,6 wire , high impact resistance , rubber external power connector.
- 3 PIN NATO AN2551 external power connector for 12V / 24V or 28VDC application
- Optional split control switch contact..
- (2 x 2) or (1 x 2) main wires configuration .
- Mates with AN2552 receptacle .
- Machined silver plated contacts .
- Special cable sizes and configurations on request .

## PROPERTIES

450 A continuous , 1500 A for 1 minute, control contact 35 A continuous.

Mates with the aircraftplugs AN2552-3A external power receptacle.

Performance and dimensions to ISO 461 (BS4G173:1985) and appropriate MOD (Air) and NSN Standards.

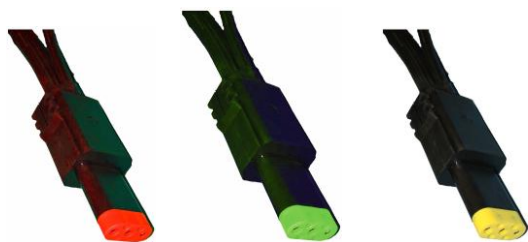
Cable assemblies to client requirements available.

Max. wire 120mm<sup>2</sup> or 4/0 AWG 250 MCM.

Stainless steel screws.

## PARTNUMBERS

| PLUG PART | Configuration     | CABLE section                                  | GRUMMET  | RECEPTACLE |
|-----------|-------------------|--|----------|------------|
| ACP3P1-4  | 4 wires / 2 wires | 8mm <sup>2</sup> #8/2                          | ACP3P1GW | ACP3R1     |
| ACP3P2-4  | 4 wires / 2 wires | 35mm <sup>2</sup> 2-1/0                        | ACP3P2GW | ACP3R2     |
| ACP3P3-4  | 4 wires / 2 wires | 50 mm <sup>2</sup> 2-1/0                       | ACP3P3GW | ACP3R3     |
| ACP3P4-4  | 4 wires / 2 wires | 70 mm <sup>2</sup> 2-2/0 single conductor      | ACP3P4GW | ACP3R4     |
| ACP3P5-4  | 4 wires / 2 wires | 70 mm <sup>2</sup> 2-2/0                       | ACP3P5GW | ACP3R5     |
| ACP3P6-4  | 4 wires / 2 wires | 90 mm <sup>2</sup> 2-3/0                       | ACP3P6GW | ACP3R6     |
| ACP3P7-4  | 4 wires / 2 wires | 120 mm <sup>2</sup> 2-4/0 single conductor     | ACP3P7GW | ACP3R7     |
| ACP3P8-4  | 4 wires / 2 wires | 120 mm <sup>2</sup> 2-4/0 oval twin conductor  | ACP3P8GW | ACP3R8     |
| ACP3P9-4  | 4 wires / 2 wires | 120 mm <sup>2</sup> 2-2/0 welding single cond. | ACP3P9GW | ACP3R9     |



## REPLACEMENT NOSE SECTIONS – ADVANTAGES - 4/5 WIRE 28VDC CONNECTOR

The new 28VDC Replaceable Contact Section from Aircraftplugs is specially designed with a tapered edge to fit securely on any aircraft on the market today that utilizes 28VDC / 24VDC power.

A highly durable composite , nylon selected for its strength, durability and longer life.

It fit all aircraft types with a DC external power receptacle.

The replacement will increase the life of cables even longer by allowing the nose cap to be easily replaced.

Main advantages :

- Increases safety on the ramp.
- Extend the life of your connectors.
- Will reduce maintenance cost.
- Construction screws together in minutes.



## PARTNUMBERS

| PLUG PART | Configuration     | CABLE section                                  | GRUMMET  | RECEPTACLE |
|-----------|-------------------|--|----------|------------|
| ACP3P1-4  | 4 wires / 2 wires | 8mm <sup>2</sup> #8/2                          | ACP3P1GW | ACP3R1     |
| ACP3P2-4  | 4 wires / 2 wires | 35mm <sup>2</sup> 2-1/0                        | ACP3P2GW | ACP3R2     |
| ACP3P3-4  | 4 wires / 2 wires | 50 mm <sup>2</sup> 2-1/0                       | ACP3P3GW | ACP3R3     |
| ACP3P4-4  | 4 wires / 2 wires | 70 mm <sup>2</sup> 2-2/0 single conductor      | ACP3P4GW | ACP3R4     |
| ACP3P5-4  | 4 wires / 2 wires | 70 mm <sup>2</sup> 2-2/0                       | ACP3P5GW | ACP3R5     |
| ACP3P6-4  | 4 wires / 2 wires | 90 mm <sup>2</sup> 2-3/0                       | ACP3P6GW | ACP3R6     |
| ACP3P7-4  | 4 wires / 2 wires | 120 mm <sup>2</sup> 2-4/0 single conductor     | ACP3P7GW | ACP3R7     |
| ACP3P8-4  | 4 wires / 2 wires | 120 mm <sup>2</sup> 2-4/0 oval twin conductor  | ACP3P8GW | ACP3R8     |
| ACP3P9-4  | 4 wires / 2 wires | 120 mm <sup>2</sup> 2-2/0 welding single cond. | ACP3P9GW | ACP3R9     |





For cable extensions or safety break-away.  
2, 3, 4 or 5 wire configuration.

## GENERAL

- Portable receptacle. High impact resistance., 3 poles DC receptacle with male contacts.
- 3 PIN NATO AN2551 external power connector for 12V / 24V or 28VDC application.
- 1 x 2 or 2 x 2 main wires configuration.
- Machined silver plated contacts.
- Special cable sizes and configurations on request.
- For cable extensions or safety break-away.
- Worldwide in use.

## PROPERTIES

450 A continuous , 1500 A for 1 minute, control contact 35 A continuous.

Mates with the aircraftplugs AN2551 external power connector

Performance and dimensions to ISO 461 (BS4G173:1985) and appropriate MOD (Air) and NSN Standards.

Cable assemblies to client requirements available.

Max. wire 120mm<sup>2</sup> or 4/0 AWG 250 MCM.

Stainless steel screws.

Receptacles available with 2 main wires or 4 main wires. Please specify upon ordering.

## PARTNUMBERS

| PLUG PART | Configuration | CABLE section                                  | GRUMMET  | RECEPTACLE |
|-----------|---------------|--|----------|------------|
| ACP3P1-4  | 4 or 2 wires  | 8mm <sup>2</sup> #8/2                          | ACP3P1GW | ACP3R1     |
| ACP3P2-4  | 4 or 2 wires  | 35mm <sup>2</sup> 2-1/0                        | ACP3P2GW | ACP3R2     |
| ACP3P3    | 4 or 2 wires  | 50 mm <sup>2</sup> 2-1/0                       | ACP3P3GW | ACP3R3     |
| ACP3P4    | 4 or 2 wires  | 70 mm <sup>2</sup> 2-2/0 single conductor      | ACP3P4GW | ACP3R4     |
| ACP3P5    | 4 or 2 wires  | 70 mm <sup>2</sup> 2-2/0                       | ACP3P5GW | ACP3R5     |
| ACP3P6    | 4 or 2 wires  | 90 mm <sup>2</sup> 2-3/0                       | ACP3P6GW | ACP3R6     |
| ACP3P7    | 4 or 2 wires  | 120 mm <sup>2</sup> 2-4/0 single conductor     | ACP3P7GW | ACP3R7     |
| ACP3P8    | 4 or 2 wires  | 120 mm <sup>2</sup> 2-4/0 oval twin conductor  | ACP3P8GW | ACP3R8     |
| ACP3P9    | 4 or 2 wires  | 120 mm <sup>2</sup> 2-2/0 welding single cond. | ACP3P9GW | ACP3R9     |


**GENERAL**

- 4,5,6 wire , high impact resistance, rubber external power connector.
- 3 PIN NATO AN2551 external power connector for 12V / 24V or 28VDC application
- split control switch contact..
- 2 x 2 ( or 1 x 2 ) main wires configuration
- Mates with AN2552 receptacle.
- Silver plated contacts.
- Special cable sizes and configurations on request.

**PROPERTIES**

450 A continuous , 1500 A for 1 minute, control contact 35 A continuous.

Mates with the aircraftplugs AN2552-3A external power receptacle.

Performance and dimensions to ISO 461 (BS4G173:1985) and appropriate MOD (Air) and NSN Standards.

Cable assemblies to client requirements available.

Max. wire 120mm<sup>2</sup> or 4/0 AWG 250 MCM.

Stainless steel screws.

**PARTNUMBERS**

| PLUG PART | Configuration | CABLE section                                  | GRUMMET  | RECEPTACLE |
|-----------|---------------|--|----------|------------|
| ACP3P1-4  | 4 wires       | 8mm <sup>2</sup> #8/2                          | ACP3P1GW | ACP3R1     |
| ACP3P2-4  | 4 wires       | 35mm <sup>2</sup> 2-1/0                        | ACP3P2GW | ACP3R2     |
| ACP3P3-4  | 4 wires       | 50 mm <sup>2</sup> 2-1/0                       | ACP3P3GW | ACP3R3     |
| ACP3P4-4  | 5 wires       | 70 mm <sup>2</sup> 2-2/0 single conductor      | ACP3P4GW | ACP3R4     |
| ACP3P5-4  | 5 wires       | 70 mm <sup>2</sup> 2-2/0                       | ACP3P5GW | ACP3R5     |
| ACP3P6-4  | 5 wires       | 90 mm <sup>2</sup> 2-3/0                       | ACP3P6GW | ACP3R6     |
| ACP3P7-4  | 5 wires       | 120 mm <sup>2</sup> 2-4/0 single conductor     | ACP3P7GW | ACP3R7     |
| ACP3P8-4  | 6 wires       | 120 mm <sup>2</sup> 2-4/0 oval twin conductor  | ACP3P8GW | ACP3R8     |
| ACP3P9-4  | 6 wires       | 120 mm <sup>2</sup> 2-2/0 welding single cond. | ACP3P9GW | ACP3R9     |


**GENERAL - ADVANTAGES**

- 400 hz – 115V , high impact resistance, rubber external power connector, worldwide in use.
- MS25486
- Silver plated contacts, pure copper.
- MS tolerances.
- Fits with the MS receptacle.
- Special cable sizes and configurations on request.
- 450 A continuous , 1500 A for 1 minute, control contact 35 A continuous.
- Performance and dimensions to ISO 461 (BS4G173:1985) and appropriate MOD (Air) and NSN Standards.
- Cable assemblies to client requirements available.
- Max. wire 120mm<sup>2</sup> or 4/0 AWG 250 MCM.
- Stainless steel screws.

**PARTNUMBERS**

| PLUG PART | Mil Part No. | CABLE section   | GRUMMET  | RECEPTACLE |
|-----------|--------------|---|----------|------------|
| ACP6P1    | -            | 15mm <sup>2</sup> #4/6 , 2 x 3mm 12/2 aux                 | ACP3P1GW | ACP6R1     |
| ACP6P2    | -            | 20mm <sup>2</sup> #4/6 , 2 x 3mm 12/2 aux                 | ACP3P2GW | ACP6R2     |
| ACP6P2    | -            | 20mm <sup>2</sup> #6/4 , 1 1/0 50mm 6x1 composite         | ACP3P3GW | ACP6R3     |
| ACP6P4    | -            | 25 mm <sup>2</sup> 3#3 single mult conductor              | ACP3P4GW | ACP6R4     |
| ACP6P5    | -            | 35 mm <sup>2</sup> 4#2 mult conductor                     | ACP3P5GW | ACP6R5     |
| ACP6P6    | MS25486-10   | 50 mm <sup>2</sup> 4-1/0 Mil C-5756C single. Cond.        | ACP3P6GW | ACP6R6     |
| ACP6P7    | MS25486-10   | 50 mm <sup>2</sup> 4-1/0 Mil C-5756C single. Cond.+2x3 mm | ACP3P7GW | ACP6R7     |
| ACP6P8    | -            | 70 mm <sup>2</sup>  | ACP3P8GW | ACP6R8     |
| ACP6P9    | -            | 90 mm <sup>2</sup> 2-2/0 welding single cond.             | ACP3P9GW | ACP6R9     |
| ACP6P10   | -            | 120mm <sup>2</sup> #4/6 , 2 x 3mm 12/2 aux                | ACP3P9GW | ACP6R10    |
| ACP6P11   | -            | With 41 mm multi. Conductor                               | ACP3P9GW | ACP6R11    |
| ACP6P12   | -            | With 39 mm multi conductor                                | ACP3P9GW | ACP6R12    |



#### 400 Hz receptacles – IP54 Mounting Boxes - ADVANTAGES

- Aluminium mounting boxes – no weldings – quality aluminium casted boxes.
- Powder coated in your color optional.
- Silver plated contacts, pure copper.
- MS tolerances.
- Fits with the MS receptacle.
- Special cable sizes and configurations on request.
- 450 A continuous , 1500 A for 1 minute, control contact 35 A continuous.
- Performance and dimensions to ISO 461 (BS4G173:1985) and appropriate MOD (Air) and NSN Standards.
- Cable assemblies to client requirements available.
- Max. wire 120mm<sup>2</sup> or 4/0 AWG 250 MCM.
- Stainless steel screws.

#### PARTNUMBERS

| PLUG PART | Description                     |
|-----------|---------------------------------|
| ACP-JB-1  | Receptacle 28VDC                |
| ACP-JB-2  | Connector 28VDC                 |
| ACP-JB-3  | Receptacle 115V / 400 Hz        |
| ACP-JB-4  | Connector 115V / 400 Hz         |
| ACP-JB-5  | Receptacle 115V / 400 Hz Green  |
| ACP-JB-6  | Receptacle 115V / 400 Hz Yellow |





### GENERAL - ADVANTAGES

- 400 Hz – 115V , high impact resistance, rubber external power connector, worldwide in use.
- MS25486
- Silver plated contacts, pure copper.
- MS tolerances.
- Fits with the MS receptacle.
- Special cable sizes and configurations on request.
- 450 A continuous , 1500 A for 1 minute, control contact 35 A continuous.
- Performance and dimensions to ISO 461 (BS4G173:1985) and appropriate MOD (Air) and NSN Standards.
- Cable assemblies to client requirements available.
- Max. wire 120mm<sup>2</sup> or 4/0 AWG 250 MCM.
- Stainless steel screws.

### PARTNUMBERS

| PLUG PART | Mil Part No. | CABLE section   | GRUMMET   | RECEPTACLE |
|-----------|--------------|---|-----------|------------|
| ACP6P1R   | -            | 15mm <sup>2</sup> #4/6 , 2 x 3mm 12/2 aux                 | ACP3P1GWR | ACP6R1     |
| ACP6P2R   | -            | 20mm <sup>2</sup> #4/6 , 2 x 3mm 12/2 aux                 | ACP3P2GWR | ACP6R2     |
| ACP6P2R   | -            | 20mm <sup>2</sup> #6/4 , 1 1/0 50mm 6x1 composite         | ACP3P3GWR | ACP6R3     |
| ACP6P4R   | -            | 25 mm <sup>2</sup> 3#3 single multiconductor              | ACP3P4GWR | ACP6R4     |
| ACP6P5R   | -            | 35 mm <sup>2</sup> 4#2 multiconductor                     | ACP3P5GWR | ACP6R5     |
| ACP6P6R   | MS25486-10   | 50 mm <sup>2</sup> 4-1/0 Mil C-5756C single. Cond.        | ACP3P6GWR | ACP6R6     |
| ACP6P7R   | MS25486-10   | 50 mm <sup>2</sup> 4-1/0 Mil C-5756C single. Cond.+2x3 mm | ACP3P7GWR | ACP6R7     |
| ACP6P8R   | -            | 70 mm <sup>2</sup>  | ACP3P8GWR | ACP6R8     |
| ACP6P9R   | -            | 90 mm <sup>2</sup> 2-2/0 welding single cond.             | ACP3P9GWR | ACP6R9     |
| ACP6P10R  | -            | 120mm <sup>2</sup> #4/6 , 2 x 3mm 12/2 aux                | ACP3P9GWR | ACP6R10    |
| ACP6P11   | -            | With 41 mm multi. Conductor                               | ACP3P9GW  | ACP6R11    |
| ACP6P12   | -            | With 39 mm multi conductor                                | ACP3P9GW  | ACP6R12    |





#### GENERAL - ADVANTAGES

- 400 hz – 115V , high impact resistance, rubber external power connector, worldwide in use.
- MS25486
- Silver plated contacts, pure copper.
- MS tolerances.
- Fits with the MS receptacle.
- Special cable sizes and configurations on request.
- 450 A continuous , 1500 A for 1 minute, control contact 35 A continuous.
- Performance and dimensions to ISO 461 (BS4G173:1985) and appropriate MOD (Air) and NSN Standards.
- Cable assemblies to client requirements available.
- Max. wire 120mm<sup>2</sup> or 4/0 AWG 250 MCM.
- Stainless steel screws.

#### PARTNUMBERS

| PLUG PART | Mil Part No. | CABLE section   | GRUMMET   | RECEPTACLE |
|-----------|--------------|---|-----------|------------|
| ACP6P1R   | -            | 15mm <sup>2</sup> #4/6 , 2 x 3mm 12/2 aux                 | ACP3P1GWR | ACP6R1     |
| ACP6P2R   | -            | 20mm <sup>2</sup> #4/6 , 2 x 3mm 12/2 aux                 | ACP3P2GWR | ACP6R2     |
| ACP6P2R   | -            | 20mm <sup>2</sup> #6/4 , 1 1/0 50mm 6x1 composite         | ACP3P3GWR | ACP6R3     |
| ACP6P4R   | -            | 25 mm <sup>2</sup> 3#3 single mult conductor              | ACP3P4GWR | ACP6R4     |
| ACP6P5R   | -            | 35 mm <sup>2</sup> 4#2 mult conductor                     | ACP3P5GWR | ACP6R5     |
| ACP6P6R   | MS25486-10   | 50 mm <sup>2</sup> 4-1/0 Mil C-5756C single. Cond.        | ACP3P6GWR | ACP6R6     |
| ACP6P7R   | MS25486-10   | 50 mm <sup>2</sup> 4-1/0 Mil C-5756C single. Cond.+2x3 mm | ACP3P7GWR | ACP6R7     |
| ACP6P8R   | -            | 70 mm <sup>2</sup>  | ACP3P8GWR | ACP6R8     |
| ACP6P9R   | -            | 90 mm <sup>2</sup> 2-2/0 welding single cond.             | ACP3P9GWR | ACP6R9     |
| ACP6P10R  | -            | 120mm <sup>2</sup> #4/6 , 2 x 3mm 12/2 aux                | ACP3P9GWR | ACP6R10    |
| ACP6P11   | -            | With 41 mm multi. Conductor                               | ACP3P9GW  | ACP6R11    |
| ACP6P12   | -            | With 39 mm multi conductor                                | ACP3P9GW  | ACP6R12    |





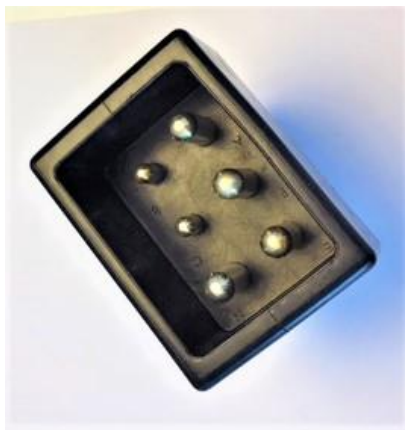
P/N ACPG200 SERIES

**GENERAL - ADVANTAGES**

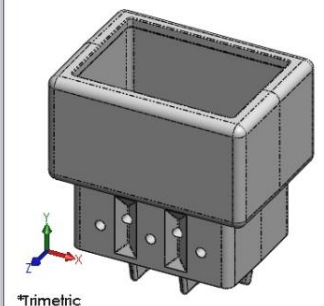
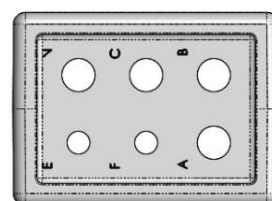
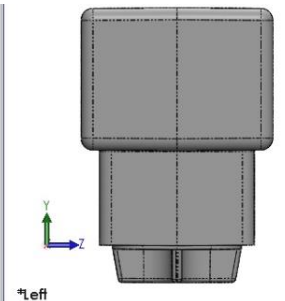
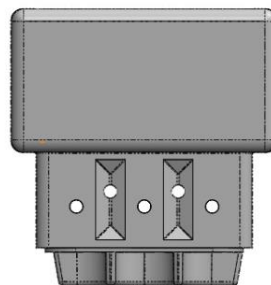
- 400 hz – 115V , high impact resistance, rubber external power connector.
- Silver plated contacts, pure copper. (replaceable).
- Replaceable, durable, none glue type head. MS tolerances.
- Fits with the MS25486 connector
- Special cable sizes and configurations on request. (Tailor made grummetts available.)
- 450 A continuous , 1500 A for 1 minute, control contact 35 A continuous.
- Performance and dimensions to ISO 461 (BS4G173:1985) and appropriate MOD (Air) and NSN Standards.
- Cable assemblies to client requirements available.
- Max. wire 120mm<sup>2</sup> or 4/0 AWG 250 MCM.
- Stainless steel screws.
- Different rubbers available on request. ( minimum qty required.)

**PARTNUMBERS**

| PLUG PART | Mil Part No. | CABLE section   | GRUMMET  | RECEPTACLE |
|-----------|--------------|---|----------|------------|
| -         | -            | 15mm <sup>2</sup> #4/6 , 2 x 3mm 12/2 aux                 | ACP3P1GW | ACPGR1     |
| -         | -            | 20mm <sup>2</sup> #4/6 , 2 x 3mm 12/2 aux                 | ACP3P2GW | ACPGR2     |
| -         | -            | 20mm <sup>2</sup> #6/4 , 1 1/0 50mm 6x1 composite         | ACP3P3GW | ACPGR3     |
| -         | -            | 25 mm <sup>2</sup> 3#3 single mulit conductor             | ACP3P4GW | ACPGR4     |
| -         | -            | 35 mm <sup>2</sup> 4#2 mulit conductor                    | ACP3P5GW | ACPGR5     |
| -         | MS25486-10   | 50 mm <sup>2</sup> 4-1/0 Mil C-5756C single. Cond.        | ACP3P6GW | ACPGR6     |
| -         | MS25486-10   | 50 mm <sup>2</sup> 4-1/0 Mil C-5756C single. Cond.+2x3 mm | ACP3P7GW | ACPGR7     |
| -         | -            | 70 mm <sup>2</sup>  | ACP3P8GW | ACPGR8     |
| -         | 4 wires      | 90 mm <sup>2</sup> 2-2/0 welding single cond.             | ACP3P9GW | ACPGR9     |
| -         |              | 120mm <sup>2</sup> #4/6 , 2 x 3mm 12/2 aux                | ACP3P9GW | ACPGR10    |
| -         |              | With 41 mm multi. Conductor                               | ACP3P9GW | ACPGR11    |
| -         |              | With 39 mm multi conductor                                | ACP3P9GW | ACPGR12    |



| Part                                 | P/N      |
|--------------------------------------|----------|
| Receptacle rubber front              | ACPG200F |
| Aux contact                          | ACPG200A |
| Locking pins                         | ACPG200L |
| Side rubber                          | ACPG200S |
| Male main contact 120mm <sup>2</sup> | ACPG200R |
| Male main contact 90mm <sup>2</sup>  | ACPG200T |
| Male main contact 70mm <sup>2</sup>  | ACPG200U |
| Male main contact 35mm <sup>2</sup>  | ACPG200V |




**GENERAL - ADVANTAGES**

- ACPG200 SERIES is new version of the ACP6R
- 400 hz – 115V , high impact resistance, rubber external power connector.
- Silver plated contacts, pure copper.
- MS tolerances.
- Fits with the MS25486 connector
- Special cable sizes and configurations on request. (Tailor made grummetts available.)
- 450 A continuous , 1500 A for 1 minute, control contact 35 A continuous.
- Performance and dimensions to ISO 461 (BS4G173:1985) and appropriate MOD (Air) and NSN Standards.
- Cable assemblies to client requirements available.
- Max. wire 120mm<sup>2</sup> or 4/0 AWG 250 MCM.
- Stainless steel screws.
- Different rubbers available on request. ( minimum qty required.)

**PARTNUMBERS**

| PLUG PART | Mil Part No. | CABLE section   | GRUMMET  | RECEPTACLE |
|-----------|--------------|---|----------|------------|
| ACP6P1    | -            | 15mm <sup>2</sup> #4/6 , 2 x 3mm 12/2 aux                 | ACP3P1GW | ACP6R1     |
| ACP6P2    | -            | 20mm <sup>2</sup> #4/6 , 2 x 3mm 12/2 aux                 | ACP3P2GW | ACP6R2     |
| ACP6P2    | -            | 20mm <sup>2</sup> #6/4 , 1 1/0 50mm 6x1 composite         | ACP3P3GW | ACP6R3     |
| ACP6P4    | -            | 25 mm <sup>2</sup> 3#3 single mulit conductor             | ACP3P4GW | ACP6R4     |
| ACP6P5    | -            | 35 mm <sup>2</sup> 4#2 mulit conductor                    | ACP3P5GW | ACP6R5     |
| ACP6P6    | MS25486-10   | 50 mm <sup>2</sup> 4-1/0 Mil C-5756C single. Cond.        | ACP3P6GW | ACP6R6     |
| ACP6P7    | MS25486-10   | 50 mm <sup>2</sup> 4-1/0 Mil C-5756C single. Cond.+2x3 mm | ACP3P7GW | ACP6R7     |
| ACP6P8    | -            | 70 mm <sup>2</sup>  | ACP3P8GW | ACP6R8     |
| ACP6P9    | 4 wires      | 90 mm <sup>2</sup> 2-2/0 welding single cond.             | ACP3P9GW | ACP6R9     |
| ACP6P10   |              | 120mm <sup>2</sup> #4/6 , 2 x 3mm 12/2 aux                | ACP3P9GW | ACP6R10    |
| ACP6P11   |              | With 41 mm multi. Conductor                               | ACP3P9GW | ACP6R11    |
| ACP6P12   |              | With 39 mm multi conductor                                | ACP3P9GW | ACP6R12    |


**GENERAL - ADVANTAGES**

- 400 hz – 115V , high impact resistance, rubber external power connector.
- Silver plated contacts, pure copper.
- MS tolerances.
- None Glue type receptacle – main body P/N ACP400
- Special cable sizes and configurations on request. (Tailor made grummetts available.)
- 450 A continuous , 1500 A for 1 minute, control contact 35 A continuous.
- Performance and dimensions to ISO 461 (BS4G173:1985) and appropriate MOD (Air) and NSN Standards.
- Cable assemblies to client requirements available.
- Max. wire 120mm<sup>2</sup> or 4/0 AWG 250 MCM.
- Stainless steel screws.
- Different rubbers available on request. ( minimum qty required.)

**PARTNUMBERS**

| CABLE section   | GRUMMET   | RECEPTACLE | Front section |
|---|-----------|------------|---------------|
| 15mm <sup>2</sup> #4/6 , 2 x 3mm 12/2 aux                 | ACP3P1GWR | ACPG6R1R   | ACPRH         |
| 20mm <sup>2</sup> #4/6 , 2 x 3mm 12/2 aux                 | ACP3P2GWR | ACP6GR2R   | ACPRH         |
| 20mm <sup>2</sup> #6/4 , 1 1/0 50mm 6x1 composite         | ACP3P3GWR | ACP6GR3R   | ACPRH         |
| 25 mm <sup>2</sup> 3#3 single mult conductor              | ACP3P4GWR | ACP6GR4R   | ACPRH         |
| 35 mm <sup>2</sup> 4#2 mult conductor                     | ACP3P5GWR | ACP6GR5R   | ACPRH         |
| 50 mm <sup>2</sup> 4-1/0 Mil C-5756C single. Cond.        | ACP3P6GWR | ACP6GR6R   | ACPRH         |
| 50 mm <sup>2</sup> 4-1/0 Mil C-5756C single. Cond.+2x3 mm | ACP3P7GWR | ACP6GR7R   | ACPRH         |
| 70 mm <sup>2</sup>  | ACP3P8GWR | ACP6GR8R   | ACPRH         |
| 90 mm <sup>2</sup> 2-2/0 welding single cond.             | ACP3P9GWR | ACP6GR9R   | ACPRH         |
| 120mm <sup>2</sup> #4/6 , 2 x 3mm 12/2 aux                | ACP3P9GWR | ACP6GR10R  | ACPRH         |
| With 41 mm multi. Conductor                               | ACP3P9GWR | ACP6GR11R  | ACPRH         |
| With 39 mm multi conductor                                | ACP3P9GWR | ACP6GR12R  | ACPRH         |



## PARTNUMBERS

- 400 hz – 115V , high impact resistance, rubber external power connector.
- Silver plated contacts, pure copper.
- MS tolerances.
- None Glue type receptacle – main body P/N ACP400
- Special cable sizes and configurations on request. (Tailor made grummets available.)
- 450 A continuous , 1500 A for 1 minute, control contact 35 A continuous.
- Performance and dimensions to ISO 461 (BS4G173:1985) and appropriate MOD (Air) and NSN Standards.
- Cable assemblies to client requirements available.
- Max. wire 120mm<sup>2</sup> or 4/0 AWG 250 MCM.
- Stainless steel screws.
- Different rubbers available on request. ( minimum qty required.)

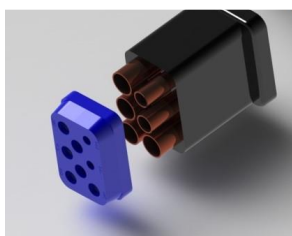


## PARTNUMBERS

| CABLE section   | GRUMMET   | SOCKET   | Front section |
|---|-----------|----------|---------------|
| 15mm <sup>2</sup> #4/6 , 2 x 3mm 12/2 aux                 | ACP3P1GWR | ACP6R1N  | ACPRN         |
| 20mm <sup>2</sup> #4/6 , 2 x 3mm 12/2 aux                 | ACP3P2GWR | ACP6R2N  | ACPRN         |
| 20mm <sup>2</sup> #6/4 , 1 1/0 50mm 6x1 composite         | ACP3P3GWR | ACP6R3N  | ACPRN         |
| 25 mm <sup>2</sup> 3#3 single mult conductor              | ACP3P4GWR | ACP6R4N  | ACPRN         |
| 35 mm <sup>2</sup> 4#2 mult conductor                     | ACP3P5GWR | ACP6R5N  | ACPRN         |
| 50 mm <sup>2</sup> 4-1/0 Mil C-5756C single. Cond.        | ACP3P6GWR | ACP6R6N  | ACPRN         |
| 50 mm <sup>2</sup> 4-1/0 Mil C-5756C single. Cond.+2x3 mm | ACP3P7GWR | ACP6R7N  | ACPRN         |
| 70 mm <sup>2</sup>  | ACP3P8GWR | ACP6R8N  | ACPRN         |
| 90 mm <sup>2</sup> 2-2/0 welding single cond.             | ACP3P9GWR | ACP6R9N  | ACPRN         |
| 120mm <sup>2</sup> #4/6 , 2 x 3mm 12/2 aux                | ACP3P9GWR | ACP6R10N | ACPRN         |
| With 41 mm multi. Conductor                               | ACP3P9GWR | ACP6R11N | ACPRN         |
| With 39 mm multi conductor                                | ACP3P9GWR | ACP6R12N | ACPRN         |



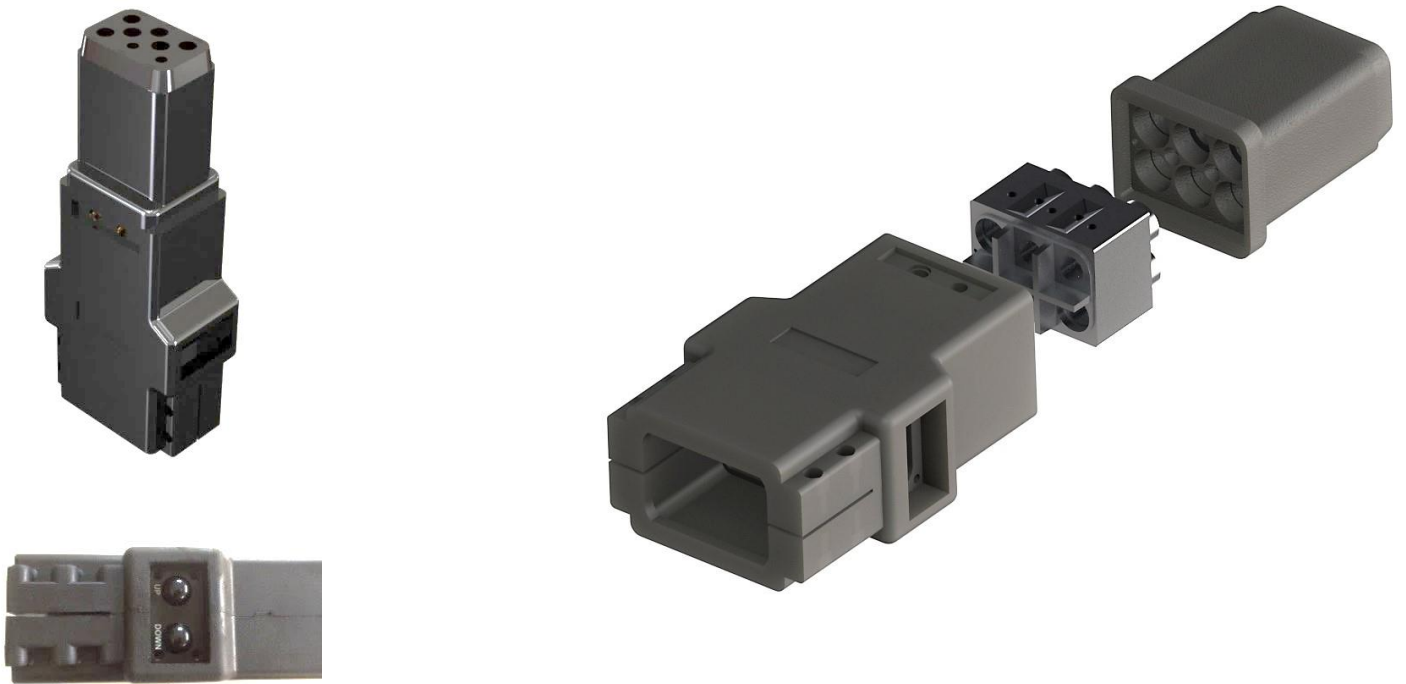
- 400 hz – 115V , high impact resistance, rubber external power connector.
- Silver plated contacts, pure copper.
- MS tolerances.
- Special cable sizes and configurations on request. (Tailor made grummetts available.)
- 450 A continuous , 1500 A for 1 minute, control contact 35 A continuous.
- Performance and dimensions to ISO 461 (BS4G173:1985) and appropriate MOD (Air) and NSN Standards.
- Cable assemblies to client requirements available.
- Max. wire 120mm<sup>2</sup> or 4/0 AWG 250 MCM.
- Stainless steel screws.
- Different rubbers available on request. ( minimum qty required.)



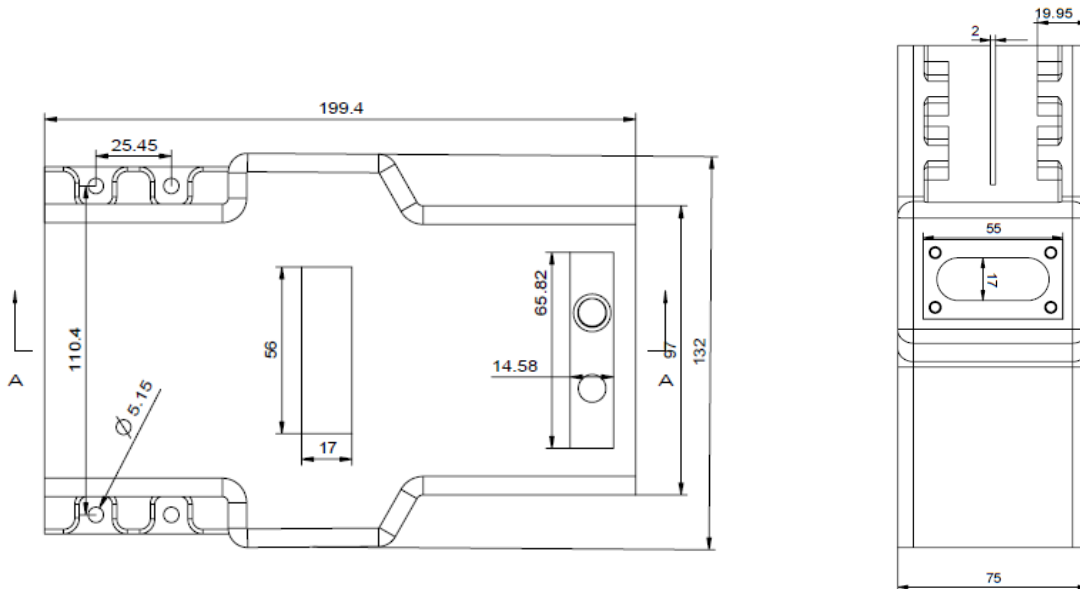
## PARTNUMBERS

| CABLE section   | GRUMMET   | SOCKET    | Front section |
|---|-----------|-----------|---------------|
| 15mm <sup>2</sup> #4/6 , 2 x 3mm 12/2 aux                 | ACP3P1GWR | ACP6R1HN  | ACPHN         |
| 20mm <sup>2</sup> #4/6 , 2 x 3mm 12/2 aux                 | ACP3P2GWR | ACP6R2HN  | ACPHH         |
| 20mm <sup>2</sup> #6/4 , 1 1/0 50mm 6x1 composite         | ACP3P3GWR | ACP6R3HN  | ACPHN         |
| 25 mm <sup>2</sup> 3#3 single mulit conductor             | ACP3P4GWR | ACP6R4HN  | ACPHN         |
| 35 mm <sup>2</sup> 4#2 mulit conductor                    | ACP3P5GWR | ACP6R5HN  | ACPHN         |
| 50 mm <sup>2</sup> 4-1/0 Mil C-5756C single. Cond.        | ACP3P6GWR | ACP6R6HN  | ACPHN         |
| 50 mm <sup>2</sup> 4-1/0 Mil C-5756C single. Cond.+2x3 mm | ACP3P7GWR | ACP6R7HN  | ACPHN         |
| 70 mm <sup>2</sup>  | ACP3P8GWR | ACP6R8HN  | ACPHN         |
| 90 mm <sup>2</sup> 2-2/0 welding single cond.             | ACP3P9GWR | ACP6R9HN  | ACPHN         |
| 120mm <sup>2</sup> #4/6 , 2 x 3mm 12/2 aux                | ACP3P9GWR | ACP6R10HN | ACPHN         |
| With 41 mm multi. Conductor                               | ACP3P9GWR | ACP6R11HN | ACPHN         |
| With 39 mm multi conductor                                | ACP3P9GWR | ACP6R12HN | ACPHN         |





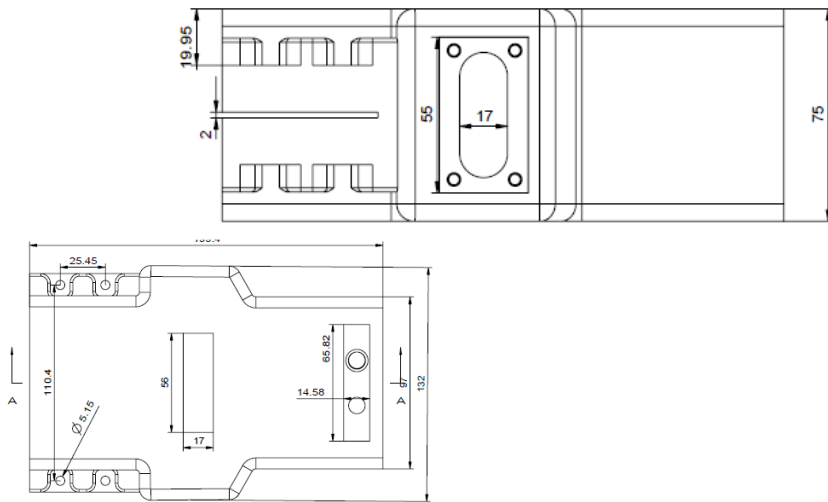
## DIMENSIONS



## TECHNICAL DATE ( Cont. On next page )

- Made in Belgium, with quality rubber, resistant to JETA1.
- Modular connector.
- Different switch and led configurations, 90% insert switch available.
- Own company logos available.

See next page



with removable nose section

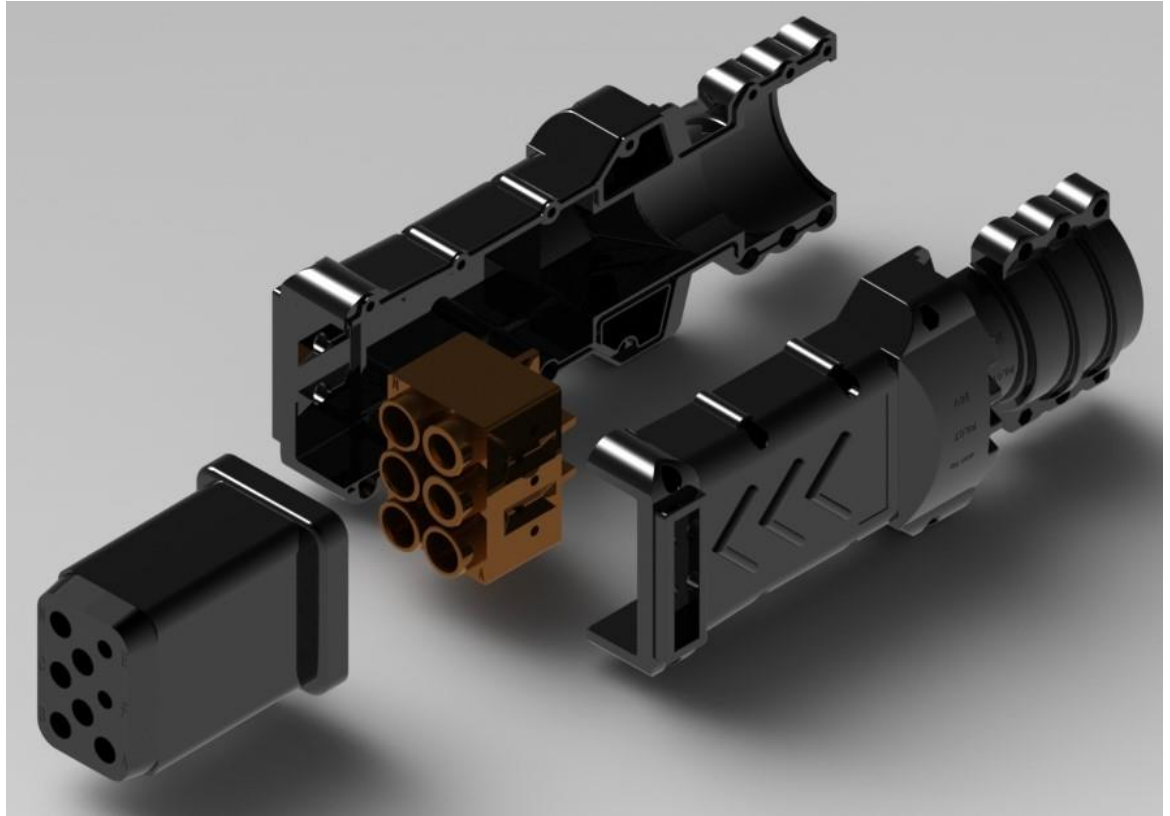
**ADVANTAGES**

- 4,5,6 wire , high impact resistance, rubber external power connector.
- 3 PIN NATO AN2551 external power connector for 12V / 24V or 28VDC application
- Modular design
- Customizable integrated LED and push-button units can be easily replaced
- 90% insert switch.
- Optional thermal nose protection.
- Special cable sizes and configurations on request.
- 450 A continuous , 1500 A for 1 minute, control contact 35 A continuous.
- Mates with the aircraftplugs AN2552-3A external power receptacle.
- Performance and dimensions to ISO 461 (BS4G173:1985) and appropriate MOD (Air) and NSN Standards.
- Cable assemblies to client requirements available.
- Max. wire 120mm<sup>2</sup> or 4/0 AWG 250 MCM.
- Stainless steel screws.

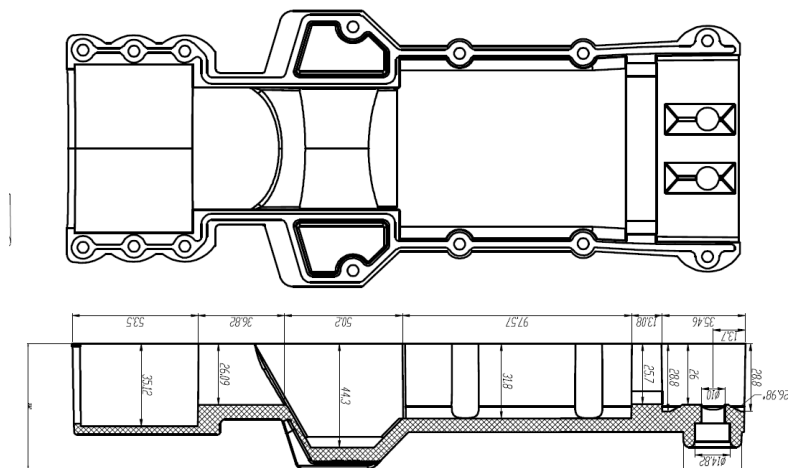
**PARTNUMBERS**

| PLUG PART | Mil Part No. | CABLE section   | GRUMMET  | RECEPTACLE |
|-----------|--------------|---|----------|------------|
| ACP6P1G   | -            | 15mm <sup>2</sup> #4/6 , 2 x 3mm 12/2 aux                 | ACP3P1GG | ACP6R1     |
| ACP6P2G   | -            | 20mm <sup>2</sup> #4/6 , 2 x 3mm 12/2 aux                 | ACP3P2GG | ACP6R2     |
| ACP6P2G   | -            | 20mm <sup>2</sup> #6/4 , 1 1/0 50mm 6x1 composite         | ACP3P3GG | ACP6R3     |
| ACP6P4G   | -            | 25 mm <sup>2</sup> 3#3 single mult conductor              | ACP3P4GG | ACP6R4     |
| ACP6P5G   | -            | 35 mm <sup>2</sup> 4#2 mult conductor                     | ACP3P5GG | ACP6R5     |
| ACP6P6G   | MS25486-10   | 50 mm <sup>2</sup> 4-1/0 Mil C-5756C single. Cond.        | ACP3P6GG | ACP6R6     |
| ACP6P7G   | MS25486-10   | 50 mm <sup>2</sup> 4-1/0 Mil C-5756C single. Cond.+2x3 mm | ACP3P7GG | ACP6R7     |
| ACP6P8G   | -            | 70 mm <sup>2</sup>  | ACP3P8GG | ACP6R8     |
| ACP6P9G   | -            | 90 mm <sup>2</sup> 2-2/0 welding single cond.             | ACP3P9GG | ACP6R9     |
| ACP6P10G  | -            | 120mm <sup>2</sup> #4/6 , 2 x 3mm 12/2 aux                | ACP3P9GG | ACP6R10    |
| ACP6P11G  | -            | With 41 mm multi. Conductor                               | ACP3P9GG | ACP6R11    |
| ACP6P12G  | -            | With 39 mm multi conductor                                | ACP3P9GG | ACP6R12    |



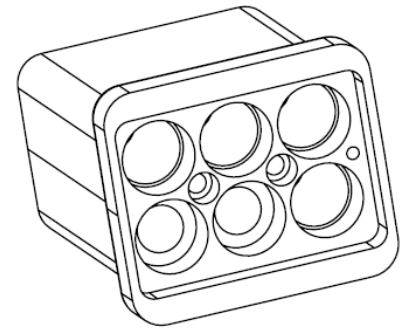
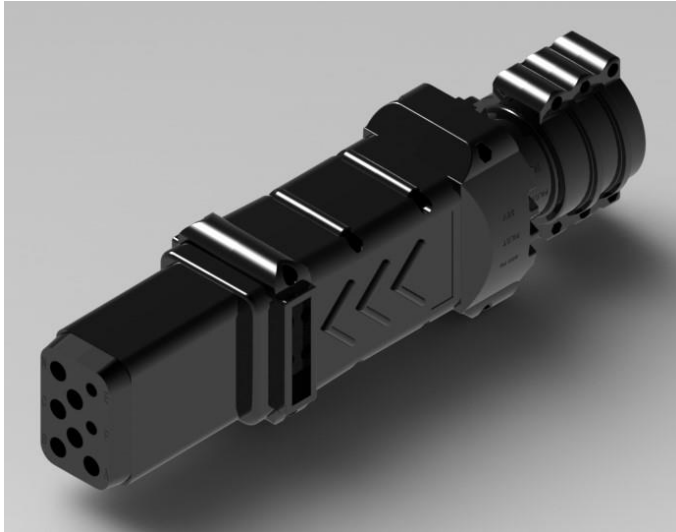


## GENERAL



## PROPERTIES

- 450 A continuous , 1500 A for 1 minute, control contact 35 A continuous.
- Mates with the aircraftplugs MS90362 external power receptacle.
- Performance and dimensions to ISO 461 (BS4G173:1985) and appropriate MOD (Air) and NSN Standards.
- Cable assemblies to client requirements available.
- Max. wire 120mm<sup>2</sup> or 4/0 AWG 250 MCM.
- Stainless steel screws.



## GENERAL

- high impact resistance, rubber & polymere external power connector.
- 400 Hz – 115 Volt, optional thermal protection in nose section.
- Solid insert switches.
- Optional temperature control.
- Special cable sizes and configurations on request.
- On / Off Up / Down switch and LED config.
- Modular connector.
- 90% insert switch.

## PROPERTIES

450 A continuous , 1500 A for 1 minute, control contact 35 A continuous.

Mates with the aircraftplugs MS90362 external power receptacle.

Performance and dimensions to ISO 461 (BS4G173:1985) and appropriate MOD (Air) and NSN Standards.

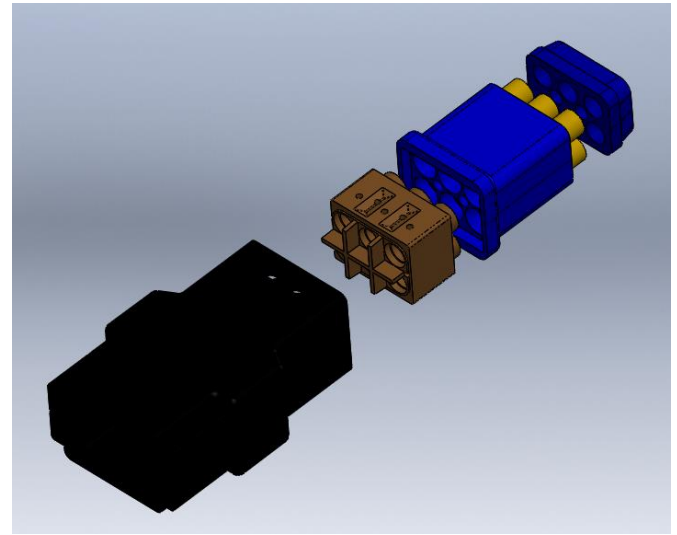
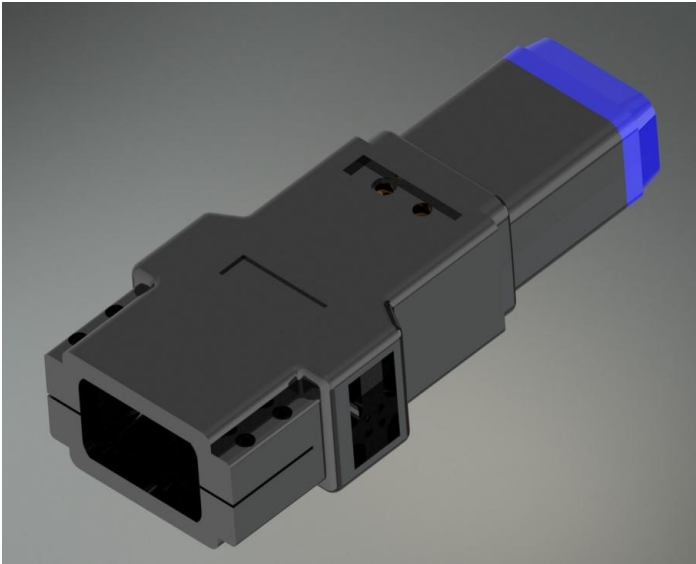
Cable assemblies to client requirements available.

Max. wire 120mm<sup>2</sup> or 4/0 AWG 250 MCM.

Stainless steel screws.

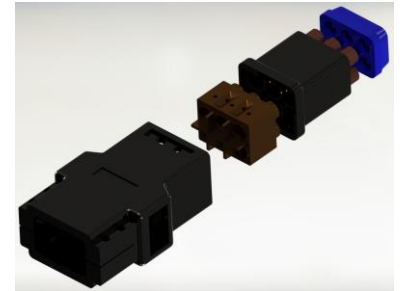
## PARTNUMBERS

| PLUG PART  | Configuration         | CABLE section                              | GRUMMET   | RECEPTACLE |
|------------|-----------------------|--|-----------|------------|
| ACP400-50  | LED / INSERT / ON-OFF | 50mm <sup>2</sup> #8/2                     | ACP400GW1 | ACP3R1     |
| ACP400-70  | LED / INSERT / ON-OFF | 70mm <sup>2</sup> 2-1/0                    | ACP400GW2 | ACP3R2     |
| ACP400-90  | LED / INSERT / ON-OFF | 90 mm <sup>2</sup> 2-1/0                   | ACP400GW3 | ACP3R3     |
| ACP400-120 | LED / INSERT / ON-OFF | 120 mm <sup>2</sup> 2-2/0 single conductor | ACP400GW4 | ACP3R4     |



## GENERAL

- high impact resistance, rubber & polymere external power connector.
- 400 Hz – 115 Volt, optional thermal protection in nose section.
- Solid insert switches.
- Optional temperature control.
- Special cable sizes and configurations on request.
- On / Off Up / Down switch and LED config.
- Modular connector.
- 90% insert switch.



## PROPERTIES

450 A continuous , 1500 A for 1 minute, control contact 35 A continuous.

Mates with the aircraftplugs MS90362 external power receptacle.

Performance and dimensions to ISO 461 (BS4G173:1985) and appropriate MOD (Air) and NSN Standards.

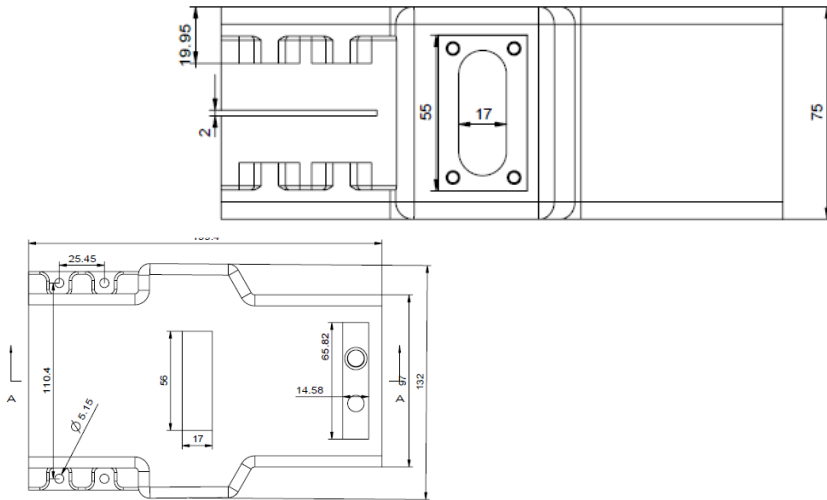
Cable assemblies to client requirements available.

Max. wire 120mm<sup>2</sup> or 4/0 AWG 250 MCM.

Stainless steel screws.

## PARTNUMBERS

| PLUG PART  | Configuration         | CABLE section                              | GRUMMET   | RECEPTACLE |
|------------|-----------------------|--|-----------|------------|
| ACP500-50  | LED / INSERT / ON-OFF | 50mm <sup>2</sup> #8/2                     | ACP400GW1 | ACP3R1     |
| ACP500-70  | LED / INSERT / ON-OFF | 70mm <sup>2</sup> 2-1/0                    | ACP400GW2 | ACP3R2     |
| ACP500-90  | LED / INSERT / ON-OFF | 90 mm <sup>2</sup> 2-1/0                   | ACP400GW3 | ACP3R3     |
| ACP500-120 | LED / INSERT / ON-OFF | 120 mm <sup>2</sup> 2-2/0 single conductor | ACP400GW4 | ACP3R4     |



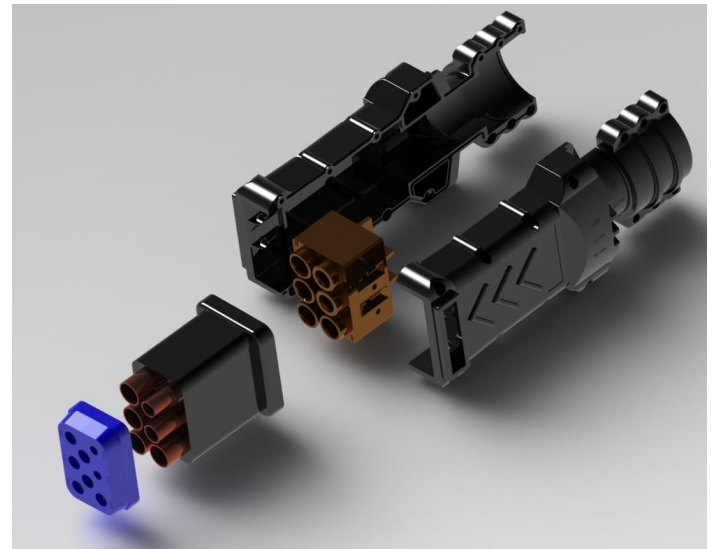
with removable nose section

### ADVANTAGES

- 4,5,6 wire , high impact resistance, rubber external power connector.
- 3 PIN NATO AN2551 external power connector for 12V / 24V or 28VDC application
- Modular design
- Customizable integrated LED and push-button units can be easily replaced
- 90% insert switch.
- Optional thermal nose protection.
- Special cable sizes and configurations on request.
- 450 A continuous , 1500 A for 1 minute, control contact 35 A continuous.
- Mates with the aircraftplugs AN2552-3A external power receptacle.
- Performance and dimensions to ISO 461 (BS4G173:1985) and appropriate MOD (Air) and NSN Standards.
- Cable assemblies to client requirements available.
- Max. wire 120mm<sup>2</sup> or 4/0 AWG 250 MCM.
- Stainless steel screws.

### PARTNUMBERS

| PLUG PART | Mil Part No. | CABLE section   | GRUMMET  | RECEPTACLE |
|-----------|--------------|---|----------|------------|
| ACP6P1G   | -            | 15mm <sup>2</sup> #4/6 , 2 x 3mm 12/2 aux                 | ACP3P1GG | ACP6R1     |
| ACP6P2G   | -            | 20mm <sup>2</sup> #4/6 , 2 x 3mm 12/2 aux                 | ACP3P2GG | ACP6R2     |
| ACP6P2G   | -            | 20mm <sup>2</sup> #6/4 , 1 1/0 50mm 6x1 composite         | ACP3P3GG | ACP6R3     |
| ACP6P4G   | -            | 25 mm <sup>2</sup> 3#3 single mult conductor              | ACP3P4GG | ACP6R4     |
| ACP6P5G   | -            | 35 mm <sup>2</sup> 4#2 mult conductor                     | ACP3P5GG | ACP6R5     |
| ACP6P6G   | MS25486-10   | 50 mm <sup>2</sup> 4-1/0 Mil C-5756C single. Cond.        | ACP3P6GG | ACP6R6     |
| ACP6P7G   | MS25486-10   | 50 mm <sup>2</sup> 4-1/0 Mil C-5756C single. Cond.+2x3 mm | ACP3P7GG | ACP6R7     |
| ACP6P8G   | -            | 70 mm <sup>2</sup>  | ACP3P8GG | ACP6R8     |
| ACP6P9G   | -            | 90 mm <sup>2</sup> 2-2/0 welding single cond.             | ACP3P9GG | ACP6R9     |
| ACP6P10G  | -            | 120mm <sup>2</sup> #4/6 , 2 x 3mm 12/2 aux                | ACP3P9GG | ACP6R10    |
| ACP6P11G  | -            | With 41 mm multi. Conductor                               | ACP3P9GG | ACP6R11    |
| ACP6P12G  | -            | With 39 mm multi conductor                                | ACP3P9GG | ACP6R12    |



## GENERAL

- high impact resistance, rubber & polymere external power connector.
- 400 Hz – 115 Volt, optional thermal protection in nose section.
- Solid insert switches.
- Optional temperature control.
- Special cable sizes and configurations on request.
- On / Off Up / Down switch and LED config.
- Modular connector.
- 90% insert switch.

## PROPERTIES

450 A continuous , 1500 A for 1 minute, control contact 35 A continuous.

Mates with the aircraftplugs MS90362 external power receptacle.

Performance and dimensions to ISO 461 (BS4G173:1985) and appropriate MOD (Air) and NSN Standards.

Cable assemblies to client requirements available.

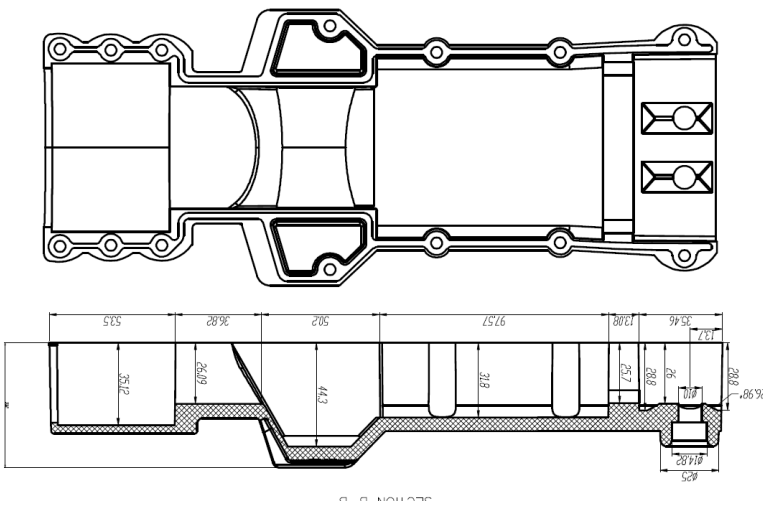
Max. wire 120mm<sup>2</sup> or 4/0 AWG 250 MCM.

Stainless steel screws.

## PARTNUMBERS

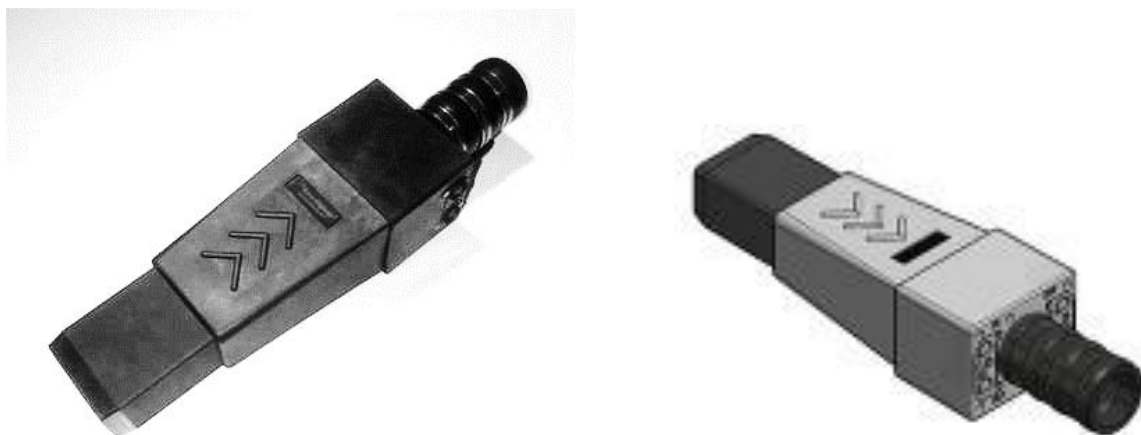
| PLUG PART  | Configuration         | CABLE section                              | GRUMMET   | RECEPTACLE |
|------------|-----------------------|--|-----------|------------|
| ACP400-50  | LED / INSERT / ON-OFF | 50mm <sup>2</sup> #8/2                     | ACP400GW1 | ACP3R1     |
| ACP400-70  | LED / INSERT / ON-OFF | 70mm <sup>2</sup> 2-1/0                    | ACP400GW2 | ACP3R2     |
| ACP400-90  | LED / INSERT / ON-OFF | 90 mm <sup>2</sup> 2-1/0                   | ACP400GW3 | ACP3R3     |
| ACP400-120 | LED / INSERT / ON-OFF | 120 mm <sup>2</sup> 2-2/0 single conductor | ACP400GW4 | ACP3R4     |




**GENERAL**

**PROPERTIES**

450 A continuous , 1500 A for 1 minute, control contact 35 A continuous.  
 Mates with the aircraftplugs MS90362 external power receptacle.  
 Performance and dimensions to ISO 461 (BS4G173:1985) and appropriate MOD (Air) and NSN Standards.  
 Cable assemblies to client requirements available.  
 Max. wire 120mm<sup>2</sup> or 4/0 AWG 250 MCM.  
 Stainless steel screws.





## GENERAL

- high impact resistance, rubber & polymere external power connector.
- 400 Hz – 115 Volt, optional thermal protection in nose section.
- Solid insert switch. Optional Temp. Protection.
- Special cable sizes and configurations on request.
- On / Off Up / Down switch and LED config.
- Modular connector.

## PROPERTIES

450 A continuous , 1500 A for 1 minute, control contact 35 A continuous.

Mates with the aircraftplugs MS90362 external power receptacle.

Performance and dimensions to ISO 461 (BS4G173:1985) and appropriate MOD (Air) and NSN Standards.

Cable assemblies to client requirements available.

Max. wire 120mm<sup>2</sup> or 4/0 AWG 250 MCM.

Stainless steel screws.

## PARTNUMBERS

| PLUG PART  | Configuration         | CABLE section                              | GRUMMET   | RECEPTACLE |
|------------|-----------------------|--|-----------|------------|
| ACP300-50  | LED / INSERT / ON-OFF | 50mm <sup>2</sup> #8/2                     | ACP300GW1 | ACP3R1     |
| ACP300-70  | LED / INSERT / ON-OFF | 70mm <sup>2</sup> 2-1/0                    | ACP300GW2 | ACP3R2     |
| ACP300-90  | LED / INSERT / ON-OFF | 90 mm <sup>2</sup> 2-1/0                   | ACP300GW3 | ACP3R3     |
| ACP300-120 | LED / INSERT / ON-OFF | 120 mm <sup>2</sup> 2-2/0 single conductor | ACP300GW4 | ACP3R4     |



## GENERAL

- high impact resistance, rubber & polymere external power connector.
- 400 Hz – 115 Volt, optional thermal protection in nose section.
- Solid insert switch.
- Special cable sizes and configurations on request.
- On / Off Up / Down switch and LED config.
- Modular connector.

## PROPERTIES

450 A continuous , 1500 A for 1 minute, control contact 35 A continuous.

Mates with the aircraftplugs MS90362 external power receptacle.

Performance and dimensions to ISO 461 (BS4G173:1985) and appropriate MOD (Air) and NSN Standards.

Cable assemblies to client requirements available.

Max. wire 120mm<sup>2</sup> or 4/0 AWG 250 MCM.

Stainless steel screws.

## PARTNUMBERS

| PLUG PART  | Configuration         | CABLE section                              | GRUMMET   | RECEPTACLE |
|------------|-----------------------|--|-----------|------------|
| ACP200-50  | LED / INSERT / ON-OFF | 50mm <sup>2</sup> #8/2                     | ACP200GW1 | ACP3R1     |
| ACP200-70  | LED / INSERT / ON-OFF | 70mm <sup>2</sup> 2-1/0                    | ACP200GW2 | ACP3R2     |
| ACP200-90  | LED / INSERT / ON-OFF | 90 mm <sup>2</sup> 2-1/0                   | ACP200GW3 | ACP3R3     |
| ACP200-120 | LED / INSERT / ON-OFF | 120 mm <sup>2</sup> 2-2/0 single conductor | ACP200GW4 | ACP3R4     |



## GENERAL

- high impact resistance, rubber & polymere external power connector.
- 400 Hz – 115 Volt, optional thermal protection in nose section.
- Solid insert switch.
- Special cable sizes and configurations on request.
- On / Off Up / Down switch and LED config.
- Modular connector.
- 450 A continuous , 1500 A for 1 minute, control contact 35 A continuous.
- Mates with the aircraftplugs MS90362 external power receptacle.
- Performance and dimensions to ISO 461 (BS4G173:1985) and appropriate MOD (Air) and NSN Standards.
- Cable assemblies to client requirements available.
- Max. wire 120mm<sup>2</sup> or 4/0 AWG 250 MCM.
- Stainless steel screws.

## PARTNUMBERS

| PLUG PART | Mil Part No. | CABLE section   | GRUMMET  | RECEPTACLE |
|-----------|--------------|---|----------|------------|
| ACP6P1    | -            | 15mm <sup>2</sup> #4/6 , 2 x 3mm 12/2 aux                 | ACP3P1GW | ACP6R1     |
| ACP6P2    | -            | 20mm <sup>2</sup> #4/6 , 2 x 3mm 12/2 aux                 | ACP3P2GW | ACP6R2     |
| ACP6P2    | -            | 20mm <sup>2</sup> #6/4 , 1 1/0 50mm 6x1 composite         | ACP3P3GW | ACP6R3     |
| ACP6P4    | -            | 25 mm <sup>2</sup> 3#3 single mulit conductor             | ACP3P4GW | ACP6R4     |
| ACP6P5    | -            | 35 mm <sup>2</sup> 4#2 mulit conductor                    | ACP3P5GW | ACP6R5     |
| ACP6P6    | MS25486-10   | 50 mm <sup>2</sup> 4-1/0 Mil C-5756C single. Cond.        | ACP3P6GW | ACP6R6     |
| ACP6P7    | MS25486-10   | 50 mm <sup>2</sup> 4-1/0 Mil C-5756C single. Cond.+2x3 mm | ACP3P7GW | ACP6R7     |
| ACP6P8    | -            | 70 mm <sup>2</sup>  | ACP3P8GW | ACP6R8     |
| ACP6P9    | -            | 90 mm <sup>2</sup> 2-2/0 welding single cond.             | ACP3P9GW | ACP6R9     |
| ACP6P10   | -            | 120mm <sup>2</sup> #4/6 , 2 x 3mm 12/2 aux                | ACP3P9GW | ACP6R10    |
| ACP6P11   | -            | With 41 mm multi. Conductor                               | ACP3P9GW | ACP6R11    |
| ACP6P12   | -            | With 39 mm multi conductor                                | ACP3P9GW | ACP6R12    |



*Rear Cover  
ACPRC400*



*Receptacle  
ACPRC50*



*Shield  
ACPRC500*



*Shield  
ACPRC100*



*Snap Cover  
ACPRC200*

## PROPERTIES

- 6 poles 400 Hz 115V receptacle.
- Meet all the requirements of MIL-C-81790.
- Receptacles are available in variety of styles to meet all your ground power connectors.
- Thermal shock -65° to + 200°C
- 2500 VRMS with <1 milli-amp leakage.
- 1500 A for 1 minute and 450 A Continues
- Optional in your color.

## PARTNUMBERS

| PLUG PART | Military Part No. | DESCRIPTION  |
|-----------|-------------------|--|
| ACPRC700  | MS90362-1         | Receptacle w/Shield and Fine Thread Terminals                |
| ACPRC50   | MS90362-3         | Receptacle only  |
| ACPRC10   | MS90362-4         | Receptacle w/Rear Cover and Shield                           |
| ACPRC100  | MS17845-1         | Shield only  |
| ACPRC400  | MS3505-1          | Rear cover only  |
| ACPRC200  | -                 | Snap cover only  |
| ACPRC600  | -                 | Receptacle without shield , rear cover and snap front cover. |

6 poles 115 V 400 Hz receptacle MS90362



Replaceable receptacle head  
P/N ACPRH28VDC



Receptacle double main contact  
P/N ACPR28VDC-D



Receptacle switch contact  
P/N ACPR28VDC-Split-Aux



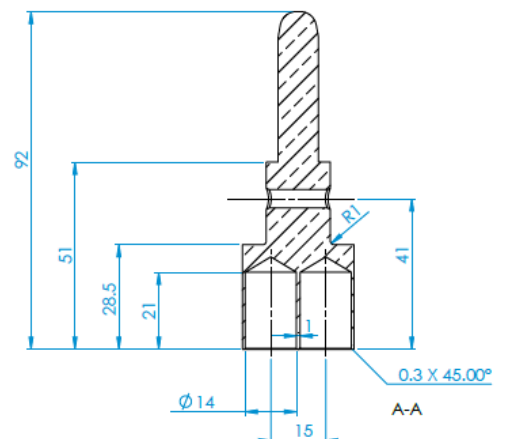
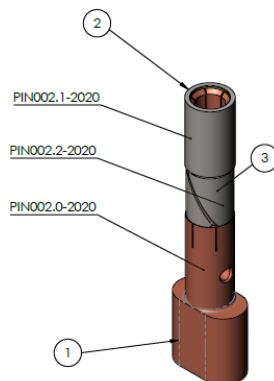
Aux switch contact  
P/N ACPS28VDC-Split-Aux

PROPERTIES

- 28VDC Replaceable receptacle head.
- According to Mil spec. MS3506-1 dimensions.
- Receptacles are available in variety of styles to meet all your ground power connectors.
- Thermal shock -65° to + 200°C
- 2500 VRMS with <1 milli-amp leakage.
- 1500 A for 1 minute and 450 A Continues
- Optional with company logo.

PARTNUMBERS

| PLUG PART           | DESCRIPTION                                   |
|---------------------|---|
| ACPRH28VDC          | Receptacle w/Shield and Fine Thread Terminals |
| ACPR28VDC-D         | Receptacle double main contact                |
| ACPR28VDC-Split-Aux | Receptacle switch contact                     |
| ACPS28VDC-Split-Aux | Aux. switch contact                           |



Pictures and data are non-binding and can be changed by the manufacturer without notice

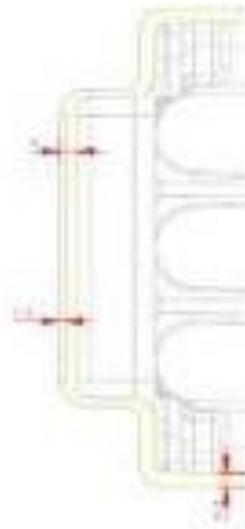
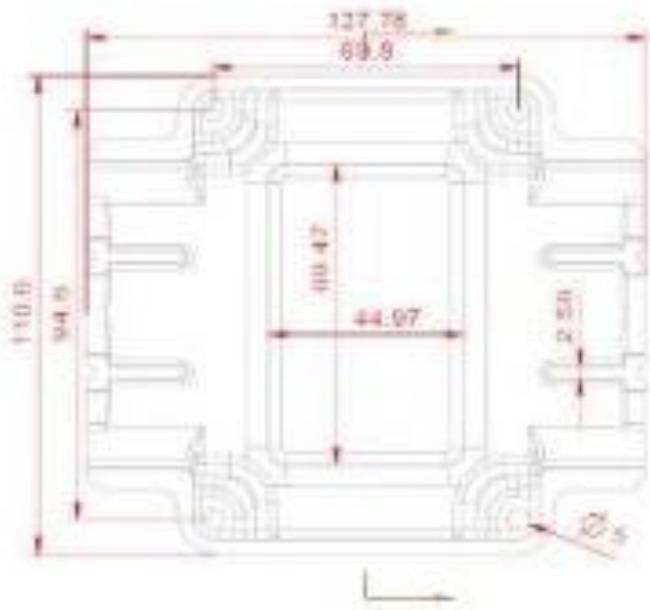






## PROPERTIES

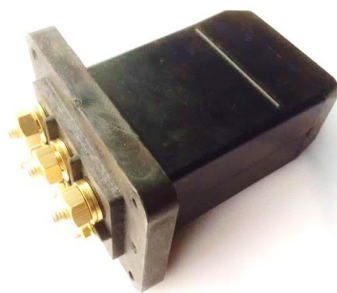
- Tailor made shield covers, to protect the electrical connector , in the material selected .  
We do inhouse anodizing and plating.  
Shields with or without hinge (springloaded) cover plates with your logo and powder coated into your RAL color.



### 400 hz receptacle rear cover

- Tailor made rear covers, to protect the electrical connector .





*ACP6B 6 poles female recept.*



*ACP3B 3 poles female recept.*

## PROPERTIES

- Female receptacle 400 hz / 115V.
- 450 A cont. , 1500 A for 1 minute.
- E&F contacts max 35 A.
- According to MIL-C-81790
- Bases are molded from reinforced material for low moisture absorption and high strength.
- 400 Hz Receptacles according to ISO461/1 AND ISO461/2, and US Military Specification MIL-C-81790 (A) / BS4G178 dimensions.
- Optional : Protected flange mounted 400Hz or 28Vdc connectors, Cast aluminium alloy housing and lid
- Crimped or soldered contacts , Mounting boxes available

## PARTNUMBERS

| PLUG PART | Description                         |
|-----------|-------------------------------------|
| ACP6B     | 400 hz , female receptacle, 6 poles |
| ACP3B     | 28VDC, female receptacle, 3 poles   |



*ACP6BR*  
*6 poles female recept. With replaceable nose section*



*ACP6BB recept. base plate*



*ACP6BM recept. pins*

## PROPERTIES

- Female receptacle 400 hz / 115V.
- 450 A cont. , 1500 A for 1 minute.
- E&F contacts max 35 A.
- According to MIL-C-81790
- Bases are molded from reinforced material for low moisture absorption and high strength.
- 400 Hz Receptacles according to ISO461/1 AND ISO461/2, and US Military Specification MIL-C-81790 (A) / BS4G178 dimensions.
- Optional : Protected flange mounted 400Hz or 28Vdc connectors, Cast aluminium alloy housing and lid
- Crimped or soldered contacts , Mounting boxes available

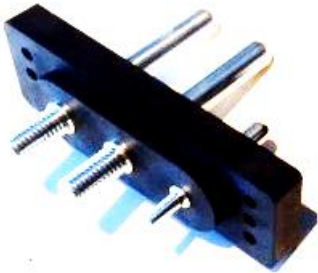
## PARTNUMBERS

| PLUG PART | Description   |
|-----------|---|
| ACP6BR    | 400 hz , female receptacle, 6 poles, hard front section |
| ACP6BB    | female receptacle, base plate.                          |



*Tailor made modular receptacle*





*AN2552 receptacle  
Without shield  
ACP-RD-1*



*Receptacle with oval  
Shield and Cover  
ACP-RD-2*



*Receptacle with  
Rectangular shield  
ACP-RD-5*



*Receptacle with oval  
Shield and cover  
ACP-RD3*

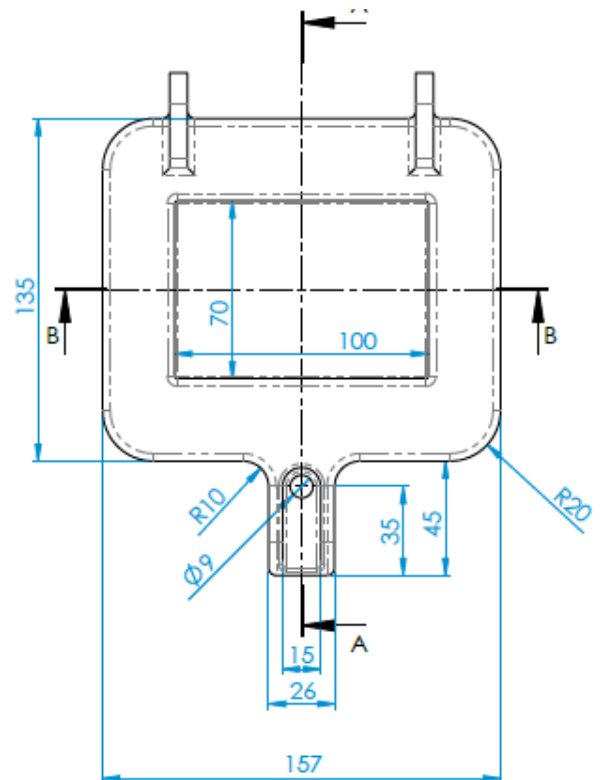
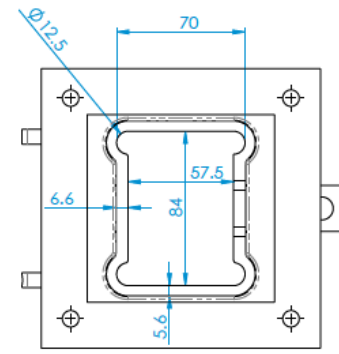
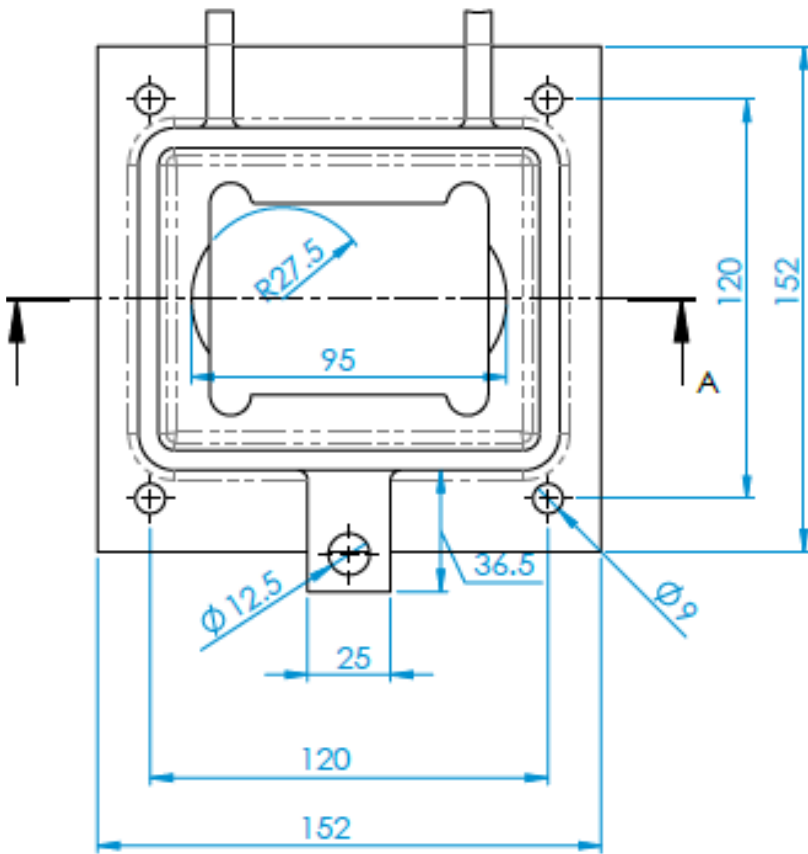
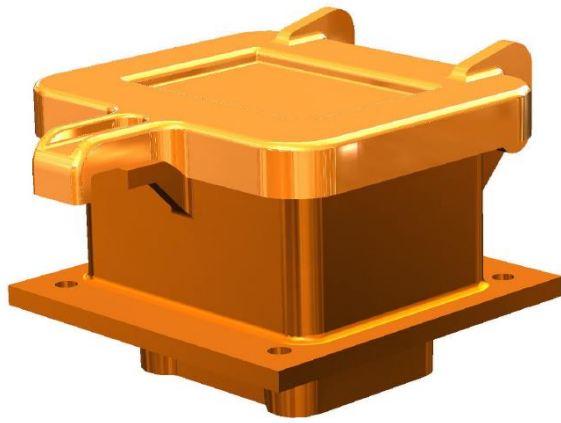
## GENERAL

- 3 poles receptacle, with a minimum of 90% IACS , molded from high-strength reinforced polymer.
- Meets requirements of MS3506-1 / MS90362.
- Receptacles are available in variety of styles to meet all your ground power connectors.
- Thermal shock -65° to + 200°C
- 2500 VRMS with <1 milli-amp leakage.
- 1500 A for 1 minute and 450 A Continues

## PARTNUMBERS

| PLUG PART | Mil reference | Description   |
|-----------|---------------|---|
| ACP-RD-1  | -             | Receptacle  |
| ACP-RD-2  | MS3506-1      | Receptacle with oval shield                         |
| ACP-RD-3  | -             | Receptacle with oval shield and snap cover          |
| ACP-RD-4  | MS90362-1     | Receptacle with oval shield and flanged cover       |
| ACP-RD-5  | -             | Receptacle with rectangular shield                  |
| ACP-RD-6  | MS25018-2     | Receptacle with rectangular shield & flanged cover. |
| ACP-RD-7  | -             | Female receptacle.                                  |









ACP-JB-1



ACP-JB-2



ACP-JB-3



ACP-JB-4



ACP-JB-5



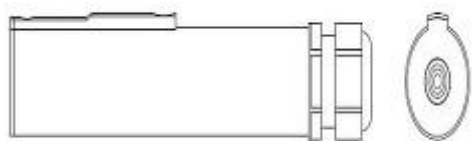
ACP-JB-6

## GENERAL

- Sealed.
- Meets requirements of MS3506-1 / MS90362.
- Receptacles are available in variety of styles to meet all your ground power connectors.
- Thermal shock -65° to + 200°C
- 2500 VRMS with <1 milli-amp leakage.
- 1500 A for 1 minute and 450 A Continues

## PARTNUMBERS

| PLUG PART | Description                     |
|-----------|---------------------------------|
| ACP-JB-1  | Receptacle 28VDC                |
| ACP-JB-2  | Connector 28VDC                 |
| ACP-JB-3  | Receptacle 115V / 400 Hz        |
| ACP-JB-4  | Connector 115V / 400 Hz         |
| ACP-JB-5  | Receptacle 115V / 400 Hz Green  |
| ACP-JB-6  | Receptacle 115V / 400 Hz Yellow |


**GENERAL**

Mates with piper receptacle sockets.

This Electrical conductors is designed for maximum efficiency and long life.

With ground return terminal. Single pole.

Brass female contact with spring-grip tension provides solid engagement with the socket.

Cable clamp holds wires firmly in place. Diecast housing. Accepts up to 0AWG cable.

Cable assemblies manufactured to customer requirements available.

Maximum 1600A based on the resistance this would give less than a .1V drop per contact.

Accepts up to 0AWG cable. Diecast metal housings.

Electrical conductors and connections are designed for maximum efficiency and long life.

With ground return terminal.

Made in Belgium.

**PARTNUMBERS**

| PLUG PART | Configuration | Description                |
|-----------|---------------|----------------------------|
| ACP12VP   | 2 wires       | 12V piper style connector  |
| ACP12VP-R | 2 wires       | 12V piper stype receptacle |


**GENERAL**

- 4 or 2 wire , high impact resistance, removable nose section , rubber external power connector.
- 3 PIN NATO AN2551 external power connector for 12V / 24V or 28VDC application
- split control switch contact on request.
- 2 x 2 main wires configuration.
- Mates with AN2552 receptacle.
- Silver plated contacts.
- Special cable sizes and configurations on request.

**PROPERTIES**

450 A continuous , 1500 A for 1 minute, control contact 35 A continuous.

Mates with the aircraftplugs AN2552-3A external power receptacle.

Performance and dimensions to ISO 461 (BS4G173:1985) and appropriate MOD (Air) and NSN Standards.

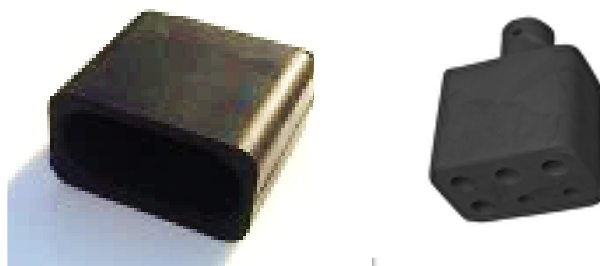
Cable assemblies to client requirements available.

Max. wire 120mm<sup>2</sup> or 4/0 AWG 250 MCM.

Stainless steel screws.

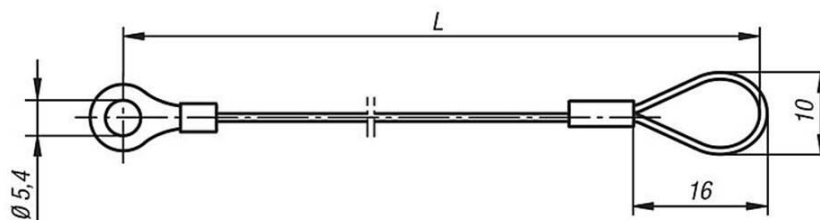
**PARTNUMBERS**

| PLUG PART | Configuration      | CABLE section                                  | GRUMMET  | RECEPTACLE |
|-----------|--------------------|--|----------|------------|
| ACP3P1-5  | 4 wires or 2 wires | 8mm <sup>2</sup> #8/2                          | ACP3P1GW | ACP3R1     |
| ACP3P2-5  | 4 wires            | 35mm <sup>2</sup> 2-1/0                        | ACP3P2GW | ACP3R2     |
| ACP3P3-5  | 4 wires            | 50 mm <sup>2</sup> 2-1/0                       | ACP3P3GW | ACP3R3     |
| ACP3P4-5  | 4 wires            | 70 mm <sup>2</sup> 2-2/0 single conductor      | ACP3P4GW | ACP3R4     |
| ACP3P5-5  | 4 wires            | 70 mm <sup>2</sup> 2-2/0                       | ACP3P5GW | ACP3R5     |
| ACP3P6-5  | 4 wires            | 90 mm <sup>2</sup> 2-3/0                       | ACP3P6GW | ACP3R6     |
| ACP3P7-5  | 4 wires            | 120 mm <sup>2</sup> 2-4/0 single conductor     | ACP3P7GW | ACP3R7     |
| ACP3P8-5  | 4 wires            | 120 mm <sup>2</sup> 2-4/0 oval twin conductor  | ACP3P8GW | ACP3R8     |
| ACP3P9-5  | 4 wires            | 120 mm <sup>2</sup> 2-2/0 welding single cond. | ACP3P9GW | ACP3R9     |


**GENERAL**

- high impact resistance, rubber external power connector nose cab.
- Mates with 3 PIN NATO AN2551 28 VDC / 3 poles external power connector or 400 Hz connector (2 versions)

| PLUG PART | Description                       |
|-----------|-----------------------------------|
| ACP3PC    | dust cover for 3 poles connector  |
| ACP6PC    | dust cover for 6 poles connector  |
| ACP3PR    | dust cover for 3 poles receptacle |
| ACP6PR    | dust cover for 6 poles receptacle |
| ACP3PCL30 | Lanyard for dust cover 30 cm      |
| ACP3PRL50 | Lanyard for dust cover 50 cm      |




**GENERAL**

- high impact resistance, rubber external power connector nose cab.
- Max 450 Amps – 3 Phase

**PARTNUMBERS**

| PLUG PART    | Description |
|--------------|-------------|
| ACPMS272656  | MS272656    |
| ACPMS272656D | dust cover  |
| ACPMS272656R | Rear part   |
|              |             |
|              |             |
|              |             |




**GENERAL**

- Machined silver plated cable shoes.
- Crimping marking and cable section information on the cable shoes.
- Pure copper or brass cable shoes for crimping or soldering.
- Made according to your requirements on request.

| PLUG PART | Description   |
|-----------|---|
| ACPCLG15  | 15mm <sup>2</sup> AWG 6 silver plated cable lug for main contacts.    |
| ACPCLG35  | 35mm <sup>2</sup> AWG 2 silver plated cable lug for main contacts.    |
| ACPCLG50  | 50mm <sup>2</sup> AWG 1/0 silver plated cable lug for main contacts.  |
| ACPCLG70  | 70mm <sup>2</sup> AWG 2/0 silver plated cable lug for main contacts.  |
| ACPCLG90  | 90mm <sup>2</sup> AWG 4/0 silver plated cable lug for main contacts.  |
| ACPCLG120 | 120mm <sup>2</sup> AWG 250 silver plated cable lug for main contacts. |
| ACPCLG4W  | 4 wires adapter lug   |
| ACPCLGEF  | E & F contact lugs  |



## GENERAL

- High Current Capacity • Rugged Construction • Safety • Serviceability
- Heavy electrical loads: current range from 40 to 200 amperes .
- Direct current or single/three phase, 60/400 Hertz alternating current
- Automatic grounding for safety
- Meet MIL-DTL-22992 qualification
- Resistance to the operating environments of heat, moisture, vibration, high impact and immersion- see chart below.

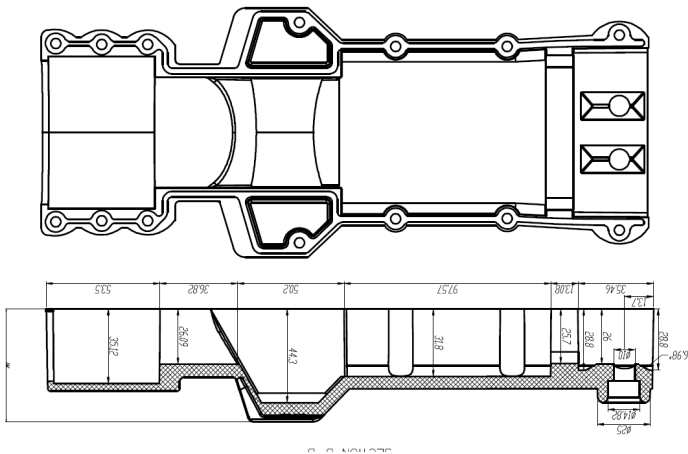
For orders , contact us for specific part numbers





## GENERAL

- Commercial Off-The-Shelf (COTS) derivative circular connectors exist that intermate with the military versions designed to MIL-C-5015/MIL-DTL-5015. Both COTS and military-style connectors are sometimes called "Type AN" connectors, "MS connectors" are notable manufacturers of this type of connectors. Aircraftplugs provides a "5015 series" rugged, versatile and environmental resistant connector with proven electrical capability in a cost effective package. 5015 series connectors are medium to heavy weight cylindrical connectors with 5 shell styles, 19 shell sizes and 5 service classes. The 5015 offers 305 contact arrangements from 1-to-104 circuits. Aircraftplugs and is the foremost manufacturer of Type "AN", MS and MS-type connectors with the widest range of connector styles, sizes and variations in the industry



## GENERAL

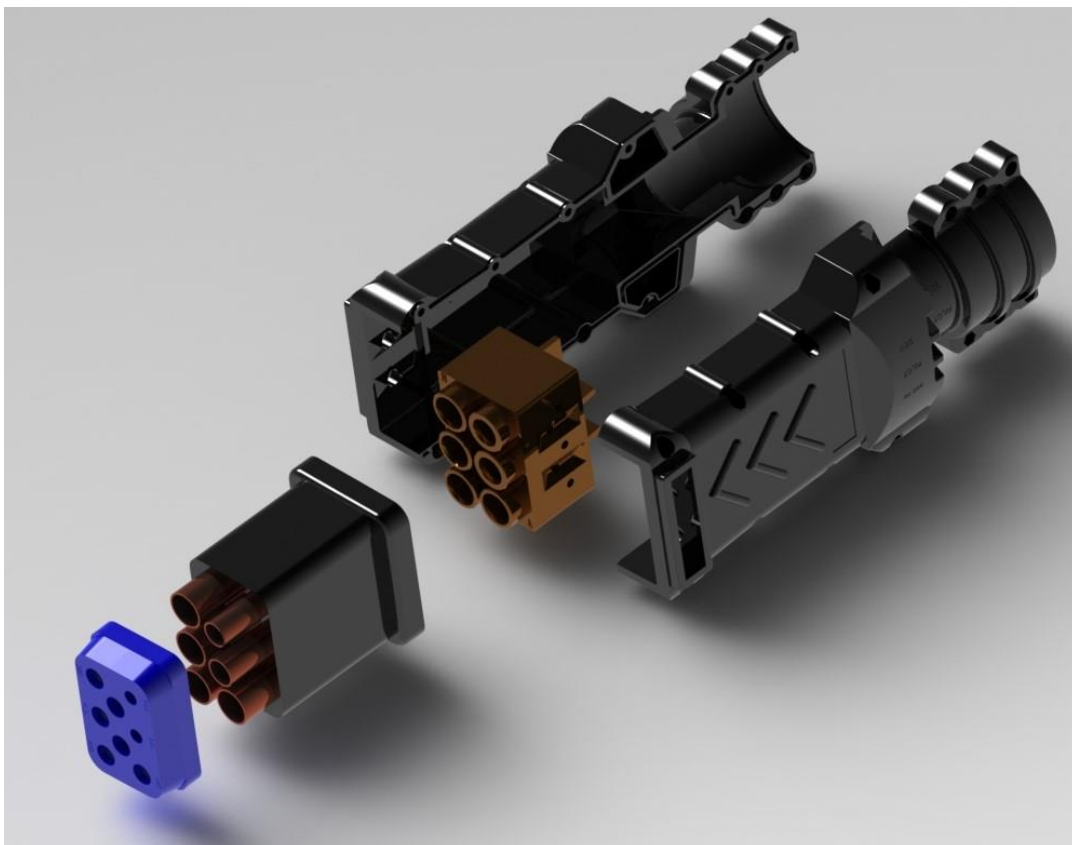
Do you have a need for a tailor made connectors (with or without housing ). We can make “made to specification” connectors. Aircraftplugs engineering team can develop the housing, connectors, help you out with material selection.

We do produce molds for plastic and rubber housing.

Small and large batches our welcome.

We provide fast turnarounds of drawings and case studies.

From concept to prototypes in several weeks.





## GENERAL

- The NATO plug, available in different cabling configurations, is widely used by military land vehicles such as the HMMWV.

## PROPERTIES

450 A continuous , 24V power supply

## PARTNUMBERS

| PLUG PART | Description                 |
|-----------|-----------------------------|
| ACP_NT_24 | 24 V connector NATO version |



## GENERAL

- Aircraftplugs grummets for 400 hz or 28VDC connectors, to protect wires, cables , and make the assembly watertight.
- Different standard sizes or tailor made grummets.

## PARTNUMBERS

| PLUG PART            | Description |
|----------------------|-------------|
| See connector pages. |             |



## GENERAL

- Aircraftplugs 28VDC cables available in different sections , standard sections 25mm<sup>2</sup> , 50 mm<sup>2</sup> or 75 mm<sup>2</sup> , 90 mm<sup>2</sup> or 120 mm<sup>2</sup>.

## ADVANTAGES

- Double insulated
- High flexibility at all operating temperatures
- Low adhesion
- Abrasion resistant
- Halogen-free
- Resistant to UV radiation, oil, hydrolysis and microbial attack



### GENERAL

- Single pole cables
- Cables with 4 control wires
- Stranded sets of 4 Cables with control wires
- Cables with 6 Cores twisted around neutral central core
- Cables with 3 Cores.

### PROPERTIES

- Double insulated
- High flexibility at all operating temperatures
- Low adhesion
- Abrasion resistant
- Halogen-free
- Resistant to UV radiation, oil, hydrolysis and microbial attack



## GENERAL

6-pole 400 Hz AC molded head- 3 poles DC molded head.  
silver-plated tellurium copper power contacts  
control contacts – control lead (twin conductor)  
Jacketed wire cable with control lead  
115/200 volts or 28VDC  
3-phase power or DC  
Minimum of 90% IACS conductivity

## PARTNUMBERS

Please contact [sales@aircraftplugs.com](mailto:sales@aircraftplugs.com)



PARTNUMBERS

Please contact [sales@aircraftplugs.com](mailto:sales@aircraftplugs.com)





### GENERAL

- Cable guidance with optional break away connectors for safety
- Powder coated construction for 400 hz or 28VDC cables assembly.
- Metallised corrosion protection
- Optional in your own colors.
- Feet for easy mounting to ramp service

### PARTNUMBERS

| PLUG PART  | Description                   |
|------------|-------------------------------|
| ACPCBG1000 | Aircraftplugs Cable guidance. |

Aircraftplugs has over 10 years of experience in producing battery connectors and receptacles, including battery vents and tubes.

To facilitate installation and removal of the battery in some aircraft, a quick disconnect assembly is used to connect the power leads to the battery. This assembly, attaches the battery leads in the aircraft to a receptacle mounted on the side of the battery. The receptacle covers the battery terminal posts and prevents accidental shorting during the installation and removal of the battery. The plug consists of a socket and a handwheel with a coarse pitch thread. It can be readily connected to the receptacle by the handwheel. Another advantage of this assembly is that the plug can be installed in only one position, eliminating the possibility of reversing the battery leads.

We Produce different types of receptacles with different cables attachments .

### MS3506 Style 1



- Mil-Spec qualified to MIL-PRF-18148/3 (MS3509). Military connector #'s include: MS3509-28, MS3509-28-1, MS3509-29, MS3509-29-1, MS3509-20, MS3509-30, MS3509-31, MS3509-32.
- Aircraftplugs battery receptacles maintain a low contact resistance, even when used in certain applications requiring 750 amps of continuous current, with peak current reaching 1500+ amps.



- Mil-Spec qualified to MIL-PRF-18148/3 (MS3509). Military connector #'s include: MS3509-28, MS3509-28-1, MS3509-29, MS3509-29-1, MS3509-20, MS3509-30, MS3509-31, MS3509-32.
- Aircraftplugs battery receptacles maintain a low contact resistance, even when used in certain applications requiring 750 amps of continuous current, with peak current reaching 1500+ amps.



- Mil-Spec qualified to MIL-PRF-18148/3 (MS3509). Military connector #'s include: MS3509-28, MS3509-28-1, MS3509-29, MS3509-29-1, MS3509-20, MS3509-30, MS3509-31, MS3509-32.
- Aircraftplugs battery receptacles maintain a low contact resistance, even when used in certain applications requiring 750 amps of continuous current, with peak current reaching 1500+ amps.

### PARTNUMBERS



- Mil-Spec qualified to MIL-PRF-18148/3 (MS3509). Military connector #'s include: MS3509-28, MS3509-28-1, MS3509-29, MS3509-29-1, MS3509-20, MS3509-30, MS3509-31, MS3509-32.
- Aircraftplugs battery receptacles maintain a low contact resistance, even when used in certain applications requiring 750 amps of continuous current, with peak current reaching 1500+ amps.

MS3506 Style 1



- Mil-Spec qualified to MIL-PRF-18148/3 (MS3509). Military connector #'s include: MS3509-28, MS3509-28-1, MS3509-29, MS3509-29-1, MS3509-20, MS3509-30, MS3509-31, MS3509-32.
- Aircraftplugs battery receptacles maintain a low contact resistance, even when used in certain applications requiring 750 amps of continuous current, with peak current reaching 1500+ amps.

Mechanical properties

- Made with precision out of High temperature nylon
- Locking possible.
- Maximum Wire Size 4/0
- Environmental Sealing IP68 (pin connector) & IP55 (socket connector)
- Operating Temperature -40° C to +125° C
- Flammability Rating UL94 V-0
- Mates with all MS battery connectors.
- 99% pure red copper contacts.
- 5 micron or more durable silver plating.

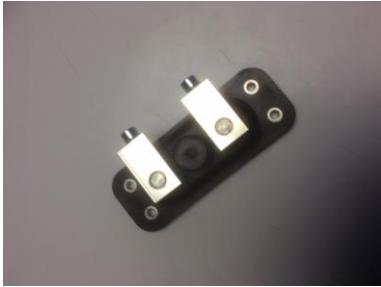
Electrical properties

- Mil-Spec qualified to MIL-PRF-18148/3 (MS3509). Military connector #'s include: MS3509-28, MS3509-28-1, MS3509-29, MS3509-29-1, MS3509-20, MS3509-30, MS3509-31, MS3509-32.
- Aircraftplugs battery receptacles maintain a low contact resistance, even when used in certain applications requiring 750 amps of continuous current, with peak current reaching 3000+ amps. Rated voltage 1000 Volts

PARTNUMBERS

| PLUG PART | Description  |
|-----------|--|
| ACPCLG15  | 15mm2 AWG 6 silver plated cable lug for main contacts.   |
| ACPCLG35  | 35mm2 AWG 2 silver plated cable lug for main contacts.   |
| ACPCLG50  | 50mm2 AWG 1/0 silver plated cable lug for main contacts. |
| ACPCLG70  | 70mm2 AWG 2/0 silver plated cable lug for main contacts. |
| ACPCLG90  | 90mm2 AWG 4/0 silver plated cable lug for main contacts. |

MS3506 Style 1



- Mil-Spec qualified to MIL-PRF-18148/3 (MS3509). Military connector #'s include: MS3509-28, MS3509-28-1, MS3509-29, MS3509-29-1, MS3509-20, MS3509-30, MS3509-31, MS3509-32.
- Aircraftplugs battery receptacles maintain a low contact resistance, even when used in certain applications requiring 750 amps of continuous current, with peak current reaching 1500+ amps.

Mechanical properties

- Made with precision out of High temperature nylon
- Locking possible.
- Maximum Wire Size 4/0
- Environmental Sealing IP68 (pin connector) & IP55 (socket connector)
- Operating Temperature -40° C to +125° C
- Flammability Rating UL94 V-0
- Mates with all MS battery connectors.
- 99% pure red copper contacts.
- 5 micron or more durable silver plating.



Electrical properties

- Mil-Spec qualified to MIL-PRF-18148/3 (MS3509). Military connector #'s include: MS3509-28, MS3509-28-1, MS3509-29, MS3509-29-1, MS3509-20, MS3509-30, MS3509-31, MS3509-32.
- Aircraftplugs battery receptacles maintain a low contact resistance, even when used in certain applications requiring 750 amps of continuous current, with peak current reaching 3000+ amps. Rated voltage 1000 Volts

PARTNUMBERS

| PLUG PART | Description                          |
|-----------|--------------------------------------|
| ACPCLGTP  | With TERMINAL ADAPTERS (Stock item). |

**MS3506 Style 2**


- Mil-Spec qualified to MIL-PRF-18148/3 (MS3509). Military connector #'s include: MS3509-28, MS3509-28-1, MS3509-29, MS3509-29-1, MS3509-20, MS3509-30, MS3509-31, MS3509-32.
- Aircraftplugs battery receptacles maintain a low contact resistance, even when used in certain applications requiring 750 amps of continuous current, with peak current reaching 1500+ amps.

**Mechanical properties**

- Made with precision out of High temperature nylon
- Locking possible.
- Own color scheme and logo possible (minimum quantity required).
- Standard color black.
- Aircraftplugs battery receptacles maintain a low contact resistance, even when used in certain applications requiring 750 amps of continuous current, with peak current reaching 1500+ amps.

**Electrical properties**

- Mil-Spec qualified to MIL-PRF-18148/3 (MS3509). Military connector #'s include: MS3509-28, MS3509-28-1, MS3509-29, MS3509-29-1, MS3509-20, MS3509-30, MS3509-31, MS3509-32.
- Aircraftplugs battery receptacles maintain a low contact resistance, even when used in certain applications requiring 750 amps of continuous current, with peak current reaching 3000+ amps.
- Rated voltage 1000 Volt.

**PARTNUMBERS**

| PLUG PART | Description  |
|-----------|--|
| ACPCLG15  | 15mm <sup>2</sup> AWG 6 silver plated cable lug for main contacts.   |
| ACPCLG35  | 35mm <sup>2</sup> AWG 2 silver plated cable lug for main contacts.   |
| ACPCLG50  | 50mm <sup>2</sup> AWG 1/0 silver plated cable lug for main contacts. |
| ACPCLG70  | 70mm <sup>2</sup> AWG 2/0 silver plated cable lug for main contacts. |
| ACPCLG90  | 90mm <sup>2</sup> AWG 4/0 silver plated cable lug for main contacts. |

## MS3506 Style 2



- Mil-Spec qualified to MIL-PRF-18148/3 (MS3509). Military connector #'s include: MS3509-28, MS3509-28-1, MS3509-29, MS3509-29-1, MS3509-20, MS3509-30, MS3509-31, MS3509-32.
- Aircraftplugs battery receptacles maintain a low contact resistance, even when used in certain applications requiring 750 amps of continuous current, with peak current reaching 1500+ amps.

## Mechanical properties

- Made with precision out of High temperature nylon
- Locking possible.
- Own color scheme and logo possible (minimum quantity required).
- Standard color black.
- Aircraftplugs battery receptacles maintain a low contact resistance, even when used in certain applications requiring 750 amps of continuous current, with peak current reaching 1500+ amps.

## Electrical properties

- Mil-Spec qualified to MIL-PRF-18148/3 (MS3509). Military connector #'s include: MS3509-28, MS3509-28-1, MS3509-29, MS3509-29-1, MS3509-20, MS3509-30, MS3509-31, MS3509-32.
- Aircraftplugs battery receptacles maintain a low contact resistance, even when used in certain applications requiring 750 amps of continuous current, with peak current reaching 1500+ amps.

## PARTNUMBERS

## MS3506 Style 2



- Mil-Spec qualified to MIL-PRF-18148/3 (MS3509). Military connector #'s include: MS3509-28, MS3509-28-1, MS3509-29, MS3509-29-1, MS3509-20, MS3509-30, MS3509-31, MS3509-32.
- Aircraftplugs battery receptacles maintain a low contact resistance, even when used in certain applications requiring 750 amps of continuous current, with peak current reaching 1500+ amps.

## Mechanical properties

- Made with precision out of High temperature nylon
- Locking possible.
- Own color scheme and logo possible (minimum quantity required).
- Standard color black.
- Aircraftplugs battery receptacles maintain a low contact resistance, even when used in certain applications requiring 750 amps of continuous current, with peak current reaching 1500+ amps.

## Electrical properties

- Mil-Spec qualified to MIL-PRF-18148/3 (MS3509). Military connector #'s include: MS3509-28, MS3509-28-1, MS3509-29, MS3509-29-1, MS3509-20, MS3509-30, MS3509-31, MS3509-32.
- Aircraftplugs battery receptacles maintain a low contact resistance, even when used in certain applications requiring 750 amps of continuous current, with peak current reaching 1500+ amps.

## PARTNUMBERS

## MS3506 Style 2



- Mil-Spec qualified to MIL-PRF-18148/3 (MS3509). Military connector #'s include: MS3509-28, MS3509-28-1, MS3509-29, MS3509-29-1, MS3509-20, MS3509-30, MS3509-31, MS3509-32.
- Aircraftplugs battery receptacles maintain a low contact resistance, even when used in certain applications requiring 750 amps of continuous current, with peak current reaching 1500+ amps.

## Mechanical properties

- Made with precision out of High temperature nylon
- Locking possible.
- Own color scheme and logo possible (minimum quantity required).
- Standard color black.
- Aircraftplugs battery receptacles maintain a low contact resistance, even when used in certain applications requiring 750 amps of continuous current, with peak current reaching 1500+ amps.

## Electrical properties

- Mil-Spec qualified to MIL-PRF-18148/3 (MS3509). Military connector #'s include: MS3509-28, MS3509-28-1, MS3509-29, MS3509-29-1, MS3509-20, MS3509-30, MS3509-31, MS3509-32.
- Aircraftplugs battery receptacles maintain a low contact resistance, even when used in certain applications requiring 750 amps of continuous current, with peak current reaching 1500+ amps.

## PARTNUMBERS




**GENERAL**

- Meets MS 25182-2
- 750 Amps cont. 1500 A for 1 minute.
- 5000 engagements
- It is designed to operate at temperature extremes of -65F to +160F.
- Different config :
  - Extended Handle
  - Extended Terminal Length
  - Low Profile w/ Stainless Steel Handle


**PARTNUMBERS**

| PLUG PART         | Configuration                         |
|-------------------|---------------------------------------|
| MS 25182-2 – ACP1 | Extended Handle                       |
| MS 25182-2 – ACP2 | Extended Terminal Length              |
| MS 25182-2 – ACP3 | Low Profile w/ Stainless Steel Handle |



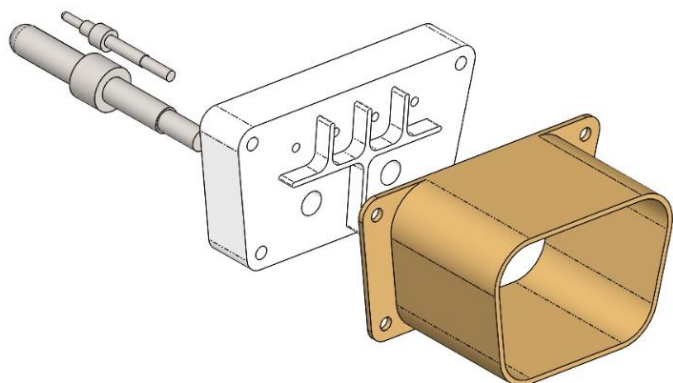
**GENERAL**

- 4, wire , high impact resistance battery connector
- Silver plated contacts.
- Special cable sizes and configurations on request.

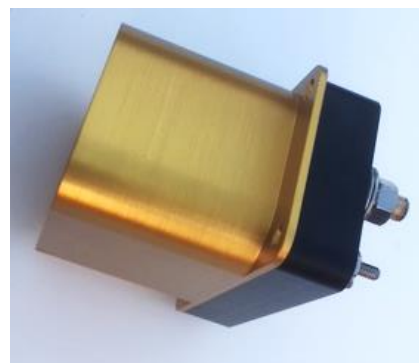
**PROPERTIES**

**PARTNUMBERS**

| PLUG PART | Configuration | CABLE section | GRUMMET | RECEPTACLE |
|-----------|---------------|---------------|---------|------------|
|           |               |               |         |            |
|           |               |               |         |            |
|           |               |               |         |            |
|           |               |               |         |            |
|           |               |               |         |            |


**GENERAL**

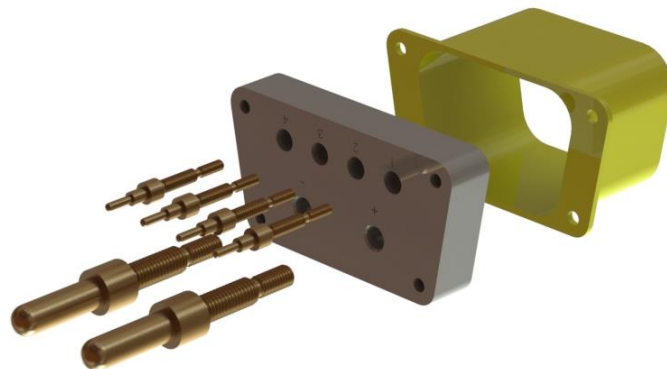
- high impact resistance connector. Ideally suited for any 270 VDC applications, including the F-22 & F-35 aircraft.
- Precision CNC , Silver plated contacts.
- Anodized aluminium shield.

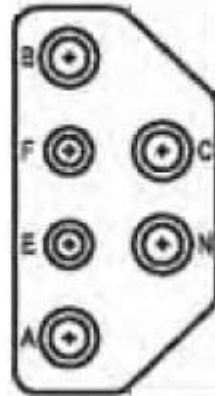

**PARTNUMBERS**

| PART  | P/N        |
|---|------------|
| 270 VDC receptacle (without shield and with contacts) | ACP270VDCR |
| 270 VDC shield  | ACP270VDCS |
| 270 VDC main contact                                  | ACP270VDCU |
| 270 VDC sense contact                                 | ACP270VDCV |
| 270 VDC rear cover                                    | ACP270VDCN |



270 VDC receptacle





**GENERAL**

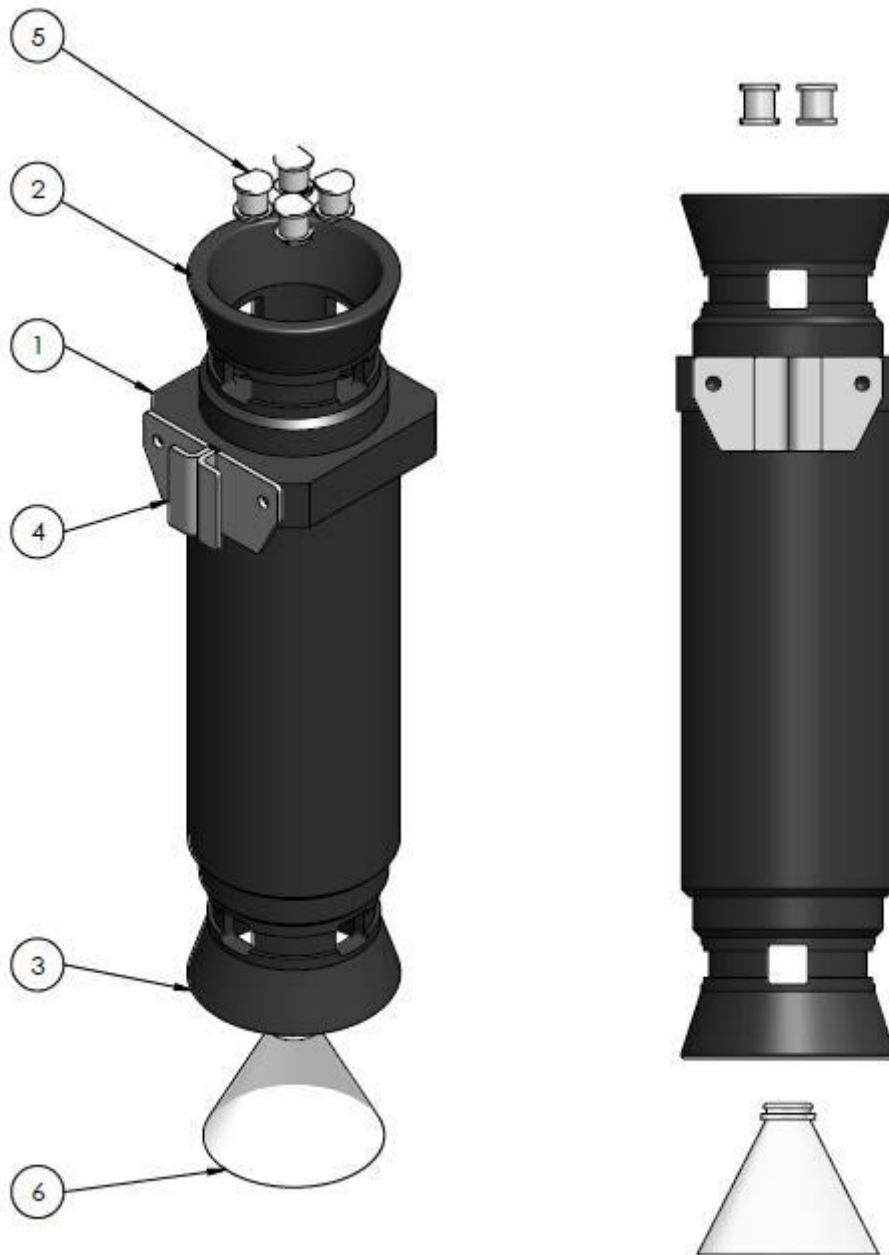
- High impact resistance connector. Ideally suited for any 270 VDC applications, including the F-22 & F-35 aircraft.
- Precision CNC , Silver plated sockets
- Vertical no maintenance.
- Resistant to abrasion, petroleum products & ozone/environmental deterioration
- Ideally suited for most common intelligent fast charging applications
- Lugs or Euro Connector on connection end
- Removable nose section



**PARTNUMBERS**

| PART                                  | P/N        |
|---------------------------------------|------------|
| 270 VDC connector                     | ACP270VDCC |
| (specify cable section upon ordering) |            |

## Portable cable BusBar





## GENERAL

- Pin Tension Gauge is used for testing insertion and retraction forces on worn aircraft cable connector.
- The Individual power contacts shall measure 24 lbs maximum insertion (A,B,C,N), extraction 16-24 lbs.; auxiliary contacts shall measure 21lbs max. (E,F).

## PROPERTIES

- Silver plated test pins included.
- Including test pins and sockets.
- Easy interchangeable pins and sockets.
- Test your connectors and receptacles accurate, can be mounted on a stand. (or hand operated ).
- Turnable display: automatic direction identification
- Secure operability due to ergonomic design.
- Real time or Peak Hold Mode to observe transients or capture peaks.
- Selectable measuring units: N, lb, kg, oz.
- Auto power off.

## PARTNUMBERS

| PART   | Configuration  |
|--------|--|
| ACPDFM | Aircraftplugs digital force meter including all pins and sockets.  |
| ACPAFM | Aircraftplugs analogue force meter including all pins and sockets. |


**GENERAL**

- Pin Tension Gauge is used for testing insertion and retraction forces on worn aircraft cable connector.
- The Individual power contacts shall measure 24 lbs maximum insertion (A,B,C,N), extraction 16-24 lbs.; auxiliary contacts shall measure 21lbs max. (E,F).

**PROPERTIES**

- Silver plated test pins included.
- Including test pins and sockets.
- Easy interchangeable pins and sockets.
- Test your connectors and receptacles accurate, can be mounted on a stand. (or hand operated )..
- Real time or Peak Hold Mode to observe transients or capture peaks.

**PARTNUMBERS**

| PART   | Configuration  |
|--------|--|
| ACPDFM | Aircraftplugs digital force meter including all pins and sockets.  |
| ACPAFM | Aircraftplugs analogue force meter including all pins and sockets. |



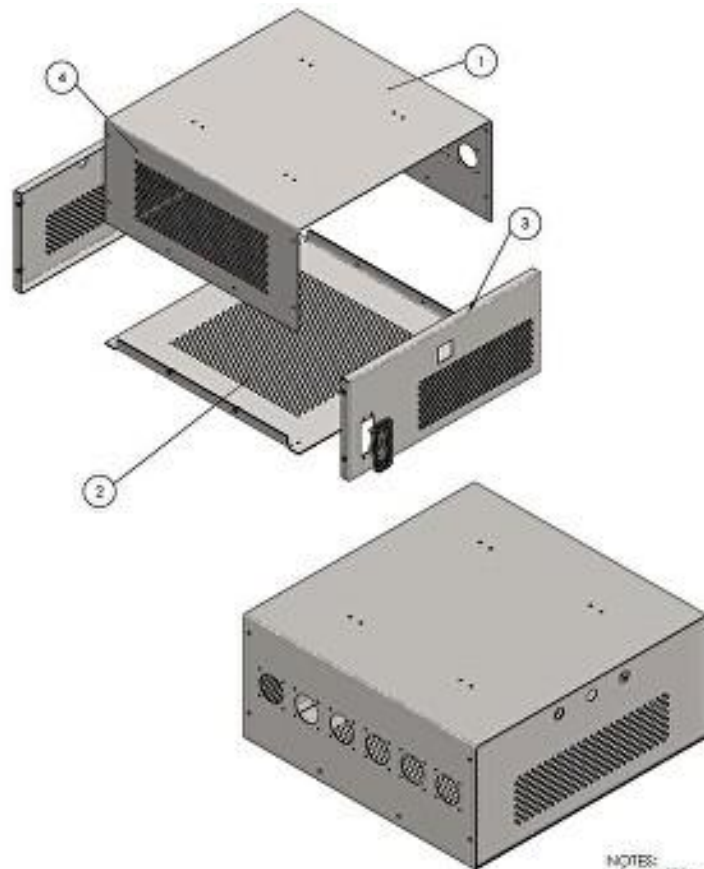


## GENERAL

- Visit our sister company website for full details [www.aero-pac.Com](http://www.aero-pac.Com)

## PROPERTIES

Low ripple  
Overvoltage protection  
Reverse current protection  
Auto cooling fan.  
AN2551 connectors with long lead.



NOTES:  
- CHAMFER ALL !!

## PROPERTIES

We design enclosures on request, or made according to your drawing.  
In aluminium or metal sheet.  
Welded or screw together, powder coated into your color.  
We perform the electrical inside installation on request.


**GENERAL**

- Nominal operating voltage: 12V/24V
- Max. continuous operating current: 100A
- Max. peak current: 500A for 5secs
- Ingress Protection (IP) rating: IP43 (solid objects >1mm and spraying water)
- Operating temp: -40°C to +50°C
- Terminal contact material: Copper
- Nut material: Zinc-plated steel
- Terminal stud size: M8 x 13mm
- Panel hole size for barrel clearance: 23mm
- Fixing hole dia: 6.6mm
- Fixing hole pitch: 38mm
- Overall height (inc. key): 106mm
- Diameter of body: 58mm
- Optional with locking key.

**PARTNUMBERS**

| PLUG PART | Description                             |
|-----------|---|
| ACPBSC-1  | Battery main switch – removable key     |
| ACPBSC-2  | Battery main switch – non removable key |
| ACPBSC-3  | Battery main switch – with lock         |



GENERAL

- 3 LED battery level indicator that can be used for monitoring the voltage level of 12V or 24V

PARTNUMBERS

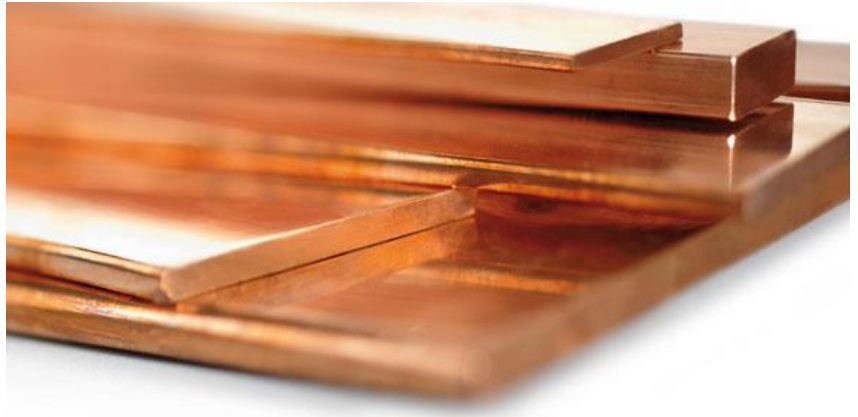
| PLUG PART  | Configuration          |
|------------|------------------------|
| ACPBATT12V | 12 V battery indicator |
| ACPBATT24V | 24 V battery indicator |


**GENERAL**

- Battery cables provide the vital link between the battery, load and charging system.
- Faulty connections can lead to poor system performance,

**PARTNUMBERS**

| PLUG PART | Cable section                 | CABLE section |
|-----------|-------------------------------|---------------|
| ACPBCPL-1 | 14 AWG – 1mm <sup>2</sup>     | 20 A          |
| ACPBCPL-1 | 12 AWG – 3 mm <sup>2</sup>    | 30 A          |
| ACPBCPL-1 | 10 AWG - 5 mm <sup>2</sup>    | 40 A          |
| ACPBCPL-1 | 8 AWG - 10 mm <sup>2</sup>    | 55 A          |
| ACPBCPL-1 | 6 AWG – 15 mm <sup>2</sup>    | 75 A          |
| ACP3P6    | 4 AWG – 25 mm <sup>2</sup>    | 95 A          |
| ACP3P7    | 2 AWG - 35 mm <sup>2</sup>    | 130 A         |
| ACP3P8    | 1 AWG – 40 mm <sup>2</sup>    | 150 A         |
| ACP3P9    | 1/0 AWG – 55 mm <sup>2</sup>  | 170 A         |
| ACP3P9    | 2/0 AWG – 70 mm <sup>2</sup>  | 265 A         |
| ACP3P9    | 4/0 AWG – 110 mm <sup>2</sup> | 360 A         |

**GENERAL**

- Large stock
- Pure copper or brass.
- CNC machined if required and cut and bended according to your drawing.

| PART   | sizes                            | Standard length |
|--------|----------------------------------|-----------------|
| Round  | 4 till 200 mm                    | 4 m             |
| Bars   | 6x6 till 80 x 40 mm              | 4 m             |
| Plates | Thickness from 0,3 mm till 80 mm | 1 m or 2 m      |


**GENERAL**

- Aircraftplugs connectors are genderless - two identical connectors are mated by turning one of them through 180 degrees and pushing them together. There are no male or female contacts. The high power contacts must be connected to the cable and inserted in the housings in order to connect the two connectors. This is because flat wipe Aircraftplugs connector type contacts are held in place by a spring that is depressed by the insertion of a contact.

**PARTNUMBERS**

| PLUG PART | Amperage | Description       |
|-----------|----------|-------------------|
| ACPBPC-1  | 50 A     | Grey – dual poles |
| ACPBPC-2  | 50 A     | Red – dual poles  |
| ACPBPC-3  | 175 A    | Grey – dual poles |
| ACPBPC-4  | 175 A    | Red – dual poles  |
| ACPBPC-5  | Handle   | Red insert handle |
| ACPBPC-6  | 350 A    | Grey – dual poles |
| ACPBPC-7  | 350 A    | Red – dual poles  |
| ACPBPC-8  | 600 A    | Grey – dual poles |
| ACPBPC-9  | 600 A    | Red – dual poles  |

Not all partnumbers / configurations are listed, check with [sales@aircraftplugs.com](mailto:sales@aircraftplugs.com) for specific requirements.

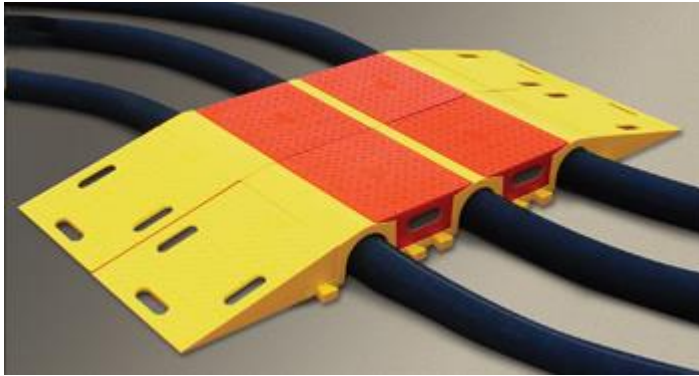

**GENERAL**

- Our compression lugs are manufactured from high-conductivity seamless copper tube to EN 12735 with a purity greater than 99.5% each product is designed to meet the requirements of BS4579 Part 3 when used with the appropriate die set/compression tool combination.
- For copper and aluminium cables

**PART NUMBER**

| PART no  | Cable section       | Fixing bolt                     |
|----------|---------------------|---------------------------------|
| ACPL-10  | 10 mm <sup>2</sup>  | Available for M6/M8/M10         |
| ACPL-16  | 16 mm <sup>2</sup>  | Available for M6/M8/M10         |
| ACPL-25  | 25 mm <sup>2</sup>  | Available for M6/M8/M10/M12/M14 |
| ACPL-36  | 36 mm <sup>2</sup>  | Available for M6/M8/M10/M12/M14 |
| ACPL-50  | 50 mm <sup>2</sup>  | Available for M6/M8/M10/M12/M14 |
| ACPL-70  | 70 mm <sup>2</sup>  | Available for M6/M8/M10/M12/M14 |
| ACPL-90  | 90 mm <sup>2</sup>  | Available for M6/M8/M10/M12/M14 |
| ACPL-120 | 120 mm <sup>2</sup> | Available for M6/M8/M10/M12/M14 |




**GENERAL**

- Cable protectors from aircraftplugs are designed to create a safe environment where volumes of pedestrians and vehicle traffic are high , mainly for airport usage.
- Different cable sections max 120 mm<sup>2</sup>
- Rubber or pvc.
- Specify requested length

**PARTNUMBERS**

| PLUG PART | Configuration             |
|-----------|---------------------------|
| ACPPP-1   | 25mm <sup>2</sup> cable   |
| ACPPP-2   | 50 mm <sup>2</sup> cable  |
| ACPPP-3   | 70 mm <sup>2</sup> cable  |
| ACPPP-4   | 90 mm <sup>2</sup> cable  |
| ACPPP-5   | 120 mm <sup>2</sup> cable |



### GENERAL

- Make cable identification a breeze with these wire markers, self-laminating cable labels, marker eze with these wire markers, self-laminating cable labels, marker

### PARTNUMBERS

Different solutions check with [sales@aircraftplugs.com](mailto:sales@aircraftplugs.com)



- wide [operating temperature](#) range (-55 to 175 °C),
- low [coefficient of friction](#),
- high resistance to chemicals and punctures
- Crimping ratio 2 : 1 minimum. (large sections have glue inside)

| Part no. | Section diameter                  |
|----------|-----------------------------------|
| ACPCK-1  | 1,6 : 0,8 mm                      |
| ACPCK-2  | 3,2 : 1,6 mm                      |
| ACPCK-3  | 6,4 : 3,2 mm                      |
| ACPCK-4  | 12,7 : 6,3 mm                     |
| ACPCK-5  | 25,4 : 12 mm (optional with glue) |
| ACPCK-6  | 50,8 : 25 mm (with glue)          |
| ACPCK-7  | 75 : 37 mm (with glue)            |
| ACPCK-8  | 100 : 50 mm (with glue)           |
| ACPCK-9  | 150 : 75 mm (with glue)           |



- Battery drain / vent tubes.
- When a battery is charged and discharged, water contained in the electrolyte is decomposed, generating hydrogen and oxygen gases. These gases are vented out of the battery through the exhaust vent tube to prevent potentially damaging high pressure gas accumulation.

| Part no. | Section diameter (outer / inner diameter) |
|----------|---|
| ACPVENT1 | 7 : 5 mm                                  |
| ACPVENT2 | 8 : 6 mm                                  |
| ACPVENT3 | 11 : 8 mm                                 |



#### GENERAL

- reduce the drag of the cable making it more efficient to move the cable into place.

#### PARTNUMBERS

| PLUG PART    | CABLE section     |
|--------------|-------------------|
| ACPPROTECT-1 | Scuff Rings-400Hz |
| ACPPROTECT-2 | Scuff Rings-400Hz |
| ACPSTRAP     | Cable strap       |



## GENERAL

- Aircraftplugs make spring operated cable reeling drums are powered with springs and has an automatic rewind feature which provides an extremely simple way of supplying power to machines such as cranes and hoists. These spring cable reeling drums are used for both AC and DC applications. These reels recovers and store the cable in multiple layers on the drum.

Standard reels are supplied for the cable fed in the clockwise direction, when viewed from the slipping side. The same can be provided for anticlockwise feed of cable also. These reels are extremely simple to mount, and can be mounted on the structure with the help of a supporting flange - If no suitable structure is available, then Unbalanced Vibrator Motor a bracket can be connected to the flange and this can be fixed to the floor or tray etc.

The springs used in these reels are manufactured from the highest quality materials and are of clock spring type. A wide range of characteristics can be obtained by assembling these springs singly or in series or in parallel.

- Request more information : [sales@aircraftplugs.com](mailto:sales@aircraftplugs.com)



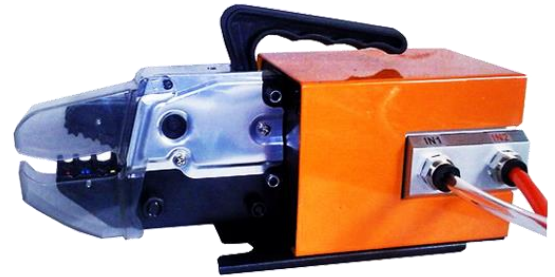
## GENERAL

- Aircraftplugs make spring operated cable reeling drums are powered with springs and has an automatic rewind feature which provides an extremely simple way of supplying power to machines such as cranes and hoists. These spring cable reeling drums are used for both AC and DC applications. These reels recovers and store the cable in multiple layerson the drum.

Standard reels are supplied for the cable fed in the clockwise direction, when viewed from the slipping side. The same can be provided for anticlockwise feed of cable also. These reels are extremely simple to mount, and can be mounted on the structure with the help of a supporting flange - If no suitable structure is available, then Unbalanced Vibrator Motor a bracket can be connected to the flange and this can be fixed to the floor or tray etc.

The springs used in these reels are manufactured from the highest quality materials and are of clock spring type. A wide range of characteristics can be obtained by assembling these springs singly or in series or in parallel.

- Request more information : [sales@aircraftplugs.com](mailto:sales@aircraftplugs.com)



## GENERAL

- Aircraftplugs make spring operated cable reeling drums are powered with springs and has an automatic rewind feature which provides an extremely simple way of supplying power to machines such as cranes and hoists. These spring cable reeling drums are used for both AC and DC applications. These reels recovers and store the cable in multiple layerson the drum.

Standard reels are supplied for the cable fed in the clockwise direction, when viewed from the slipping side. The same can be provided for anticlockwise feed of cable also. These reels are extremely simple to mount, and can be mounted on the structure with the help of a supporting flange - If no suitable structure is available, then Unbalanced Vibrator Motor a bracket can be connected to the flange and this can be fixed to the floor or tray etc.

The springs used in these reels are manufactured from the highest quality materials and are of clock spring type. A wide range of characteristics can be obtained by assembling these springs singly or in series or in parallel.

- Request more information : [sales@aircraftplugs.com](mailto:sales@aircraftplugs.com)





GENERAL

- Request more information : [sales@aircraftplugs.com](mailto:sales@aircraftplugs.com)



GENERAL

- For fueling or maintenance operations and complies with mil-spec M83413/7-1
- MS-3493-5
- 

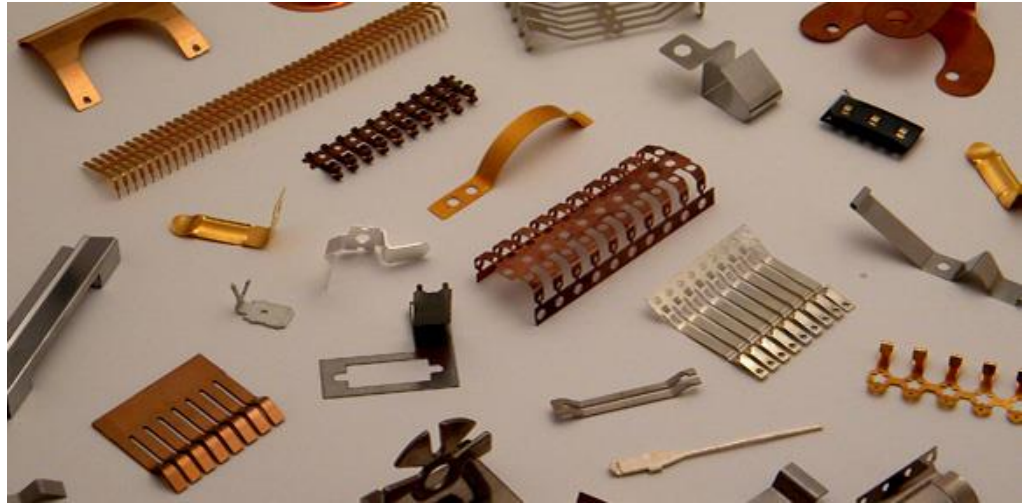
- Request more information : [sales@aircraftplugs.com](mailto:sales@aircraftplugs.com)





## GENERAL

- NAS shear bolts have a distinctive thin style, dimpled hex head and short thread. To be used in only shear applications with no threads exposed in the shear
- Request more information : [sales@aircraftplugs.com](mailto:sales@aircraftplugs.com)



GENERAL

- Request more information : [sales@aircraftplugs.com](mailto:sales@aircraftplugs.com)



GENERAL

- Request more information : [sales@aircraftplugs.com](mailto:sales@aircraftplugs.com)



## GENERAL

- Currently, our maximum turning capacity is 31.5" O.D. by 34" long. Our machining capacity is 50" wide x 40" long x 17" high and 2,500 pounds. A look at our state-of-the-art CNC machined part facility will show:
- CNC Live Tooling
- Turning Centers
- Sub Spindle Technology
- Cell Manufacturing
- CNC Machining Centers
- Bar Feed Machining Cells
- Auto Loading Robotic Turning Centers



## GENERAL

- Aircraftplugs make spring operated cable reeling drums are powered with springs and has an automatic rewind feature which provides an extremely simple way of supplying power to machines such as cranes and hoists. These spring cable reeling drums are used for both AC and DC applications. These reels recovers and store the cable in multiple layers on the drum.

Standard reels are supplied for the cable fed in the clockwise direction, when viewed from the slipping side. The same can be provided for anticlockwise feed of cable also. These reels are extremely simple to mount, and can be mounted on the structure with the help of a supporting flange - If no suitable structure is available, then Unbalanced Vibrator Motor a bracket can be connected to the flange and this can be fixed to the floor or tray etc.

The springs used in these reels are manufactured from the highest quality materials and are of clock spring type. A wide range of characteristics can be obtained by assembling these springs singly or in series or in parallel.

- Request more information : [sales@aircraftplugs.com](mailto:sales@aircraftplugs.com)

**Male BNC****Female BNC****Male TNC****Female TNC****GENERAL**

- Aircraftplugs make spring operated cable reeling drums are powered with springs and has an automatic rewind feature which provides an extremely simple way of supplying power to machines such as cranes and hoists. These spring cable reeling drums are used for both AC and DC applications. These reels recovers and store the cable in multiple layers on the drum.

Standard reels are supplied for the cable fed in the clockwise direction, when viewed from the slipping side. The same can be provided for anticlockwise feed of cable also. These reels are extremely simple to mount, and can be mounted on the structure with the help of a supporting flange - If no suitable structure is available, then Unbalanced Vibrator Motor a bracket can be connected to the flange and this can be fixed to the floor or tray etc.

The springs used in these reels are manufactured from the highest quality materials and are of clock spring type. A wide range of characteristics can be obtained by assembling these springs singly or in series or in parallel.

- Request more information : [sales@aircraftplugs.com](mailto:sales@aircraftplugs.com)





## GENERAL

- Aircraftplugs make spring operated cable reeling drums are powered with springs and has an automatic rewind feature which provides an extremely simple way of supplying power to machines such as cranes and hoists. These spring cable reeling drums are used for both AC and DC applications. These reels recovers and store the cable in multiple layers on the drum.

Standard reels are supplied for the cable fed in the clockwise direction, when viewed from the slipping side. The same can be provided for anticlockwise feed of cable also. These reels are extremely simple to mount, and can be mounted on the structure with the help of a supporting flange - If no suitable structure is available, then Unbalanced Vibrator Motor a bracket can be connected to the flange and this can be fixed to the floor or tray etc.

The springs used in these reels are manufactured from the highest quality materials and are of clock spring type. A wide range of characteristics can be obtained by assembling these springs singly or in series or in parallel.

- Request more information : [sales@aircraftplugs.com](mailto:sales@aircraftplugs.com)



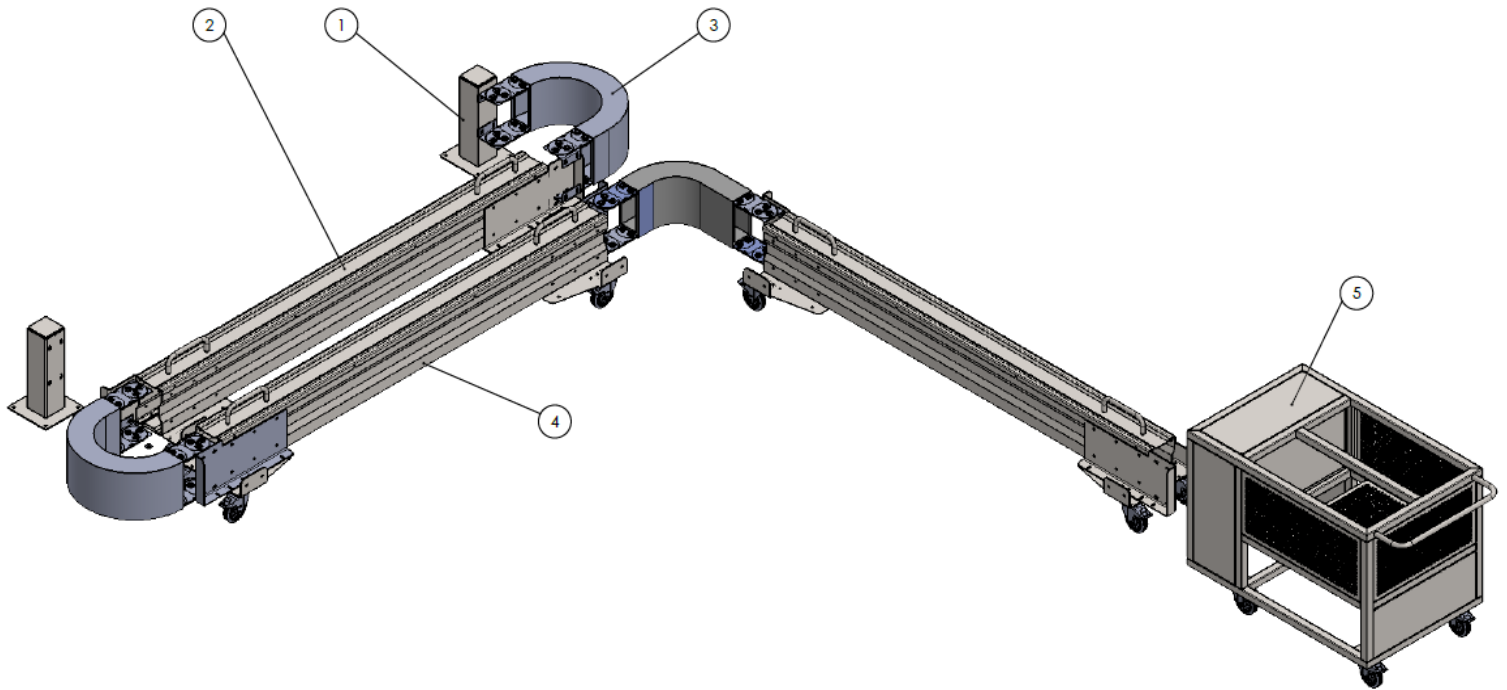
#### Technical data

- Aircraftplugs GPU testers for AC and DC.
- Tailor made solutions available.
- Send an email to [info@aircraftplugs.com](mailto:info@aircraftplugs.com) for more information.



More information

- Do you look for PCA adapters , Airstart couplings , LAV – Water 1 inch  $\frac{3}{4}$  inch couplings, we produce them and have large stock.



More information

- Please contact our sales team for crocodile cable carriers , tailor made solutions.



More information

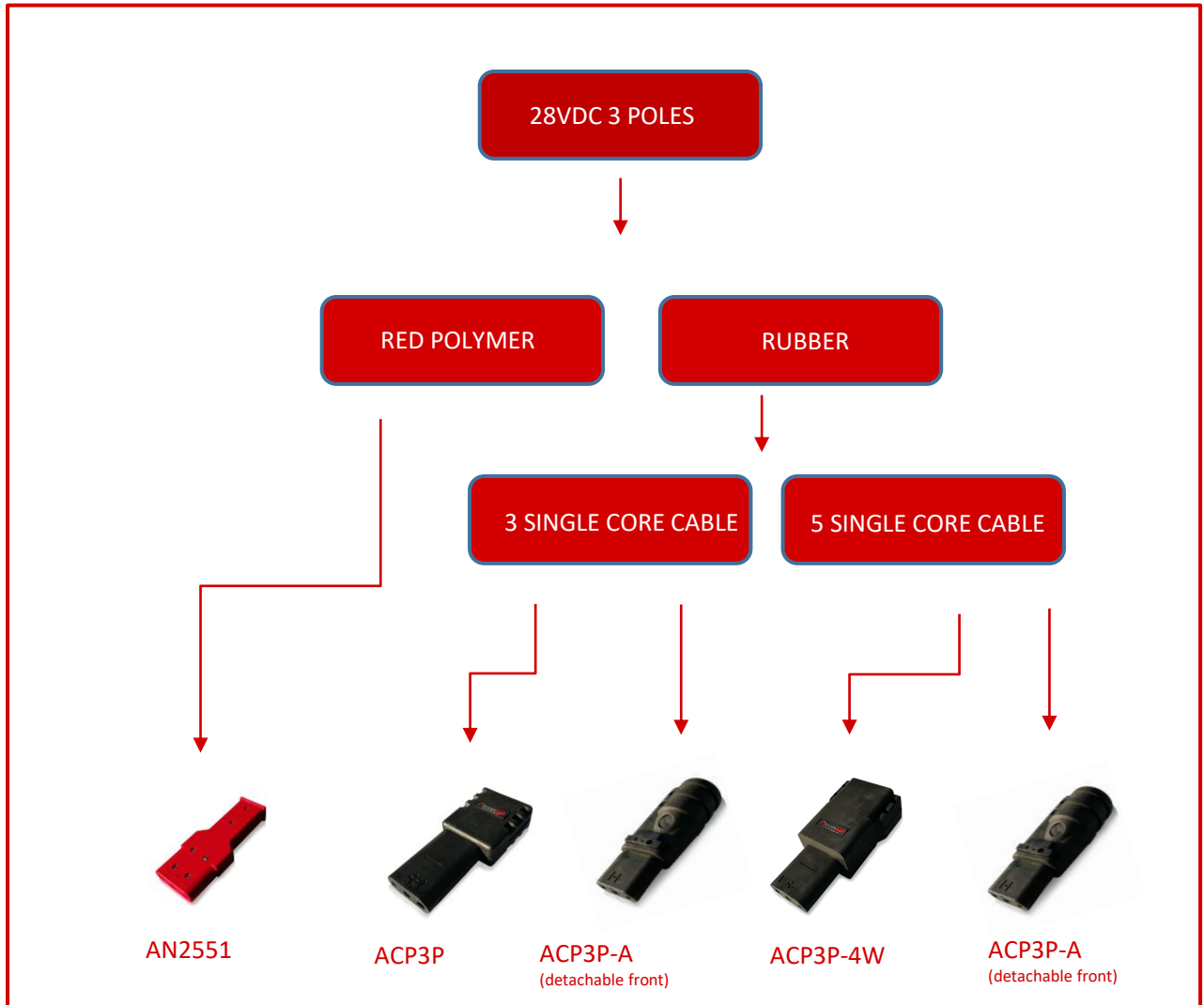
- Do you look for key gadget holder with your company brand on it, or other publicity material in rubber. Or you need rubber seal or technical rubber product. We produce all kinds of precision rubber molded components and rubber-to-metal bonded assemblies at competitive pricing. We do also welcome small series.

**AWG to mm2 conversion table**

| SIZE AWG<br>OR MCM | Mm2   | Aprox. Diameter | Maximum amps<br>Single conductor<br>copper (NFPA) |
|--------------------|-------|-----------------|---|
| 20                 | 0,52  | ,97             | 7   |
| 18                 | 0,82  | 1,22            | 10  |
| 16                 | 1,31  | 1,52            | 15  |
| 14                 | 2,08  | 1,98            | 20  |
| 12                 | 3,31  | 2,57            | 25  |
| 10                 | 5,26  | 3,2             | 40  |
| 8                  | 8,37  | 4,11            | 65  |
| 6                  | 13,3  | 5,46            | 95  |
| 4                  | 21,15 | 6,83            | 125   |
| 2                  | 33,62 | 8,56            | 170   |
| 1                  | 42,41 | 9,55            | 195   |
| 1/0                | 53,50 | 10,74           | 230   |
| 2/0                | 67,43 | 12,9            | 265   |
| 3/0                | 85,01 | 14,63           | 310   |
| 4/0                | 107,2 | 16,38           | 360   |
| 250                | 126,7 | 18,11           | 405   |
| 300                | 152,0 | 19,51           | 445   |
| 500                | 253,4 | 25,32           | 620   |
| 750                | 380,0 | 30,66           | 785   |
| 1000               | 506,7 | 35,66           | 935   |

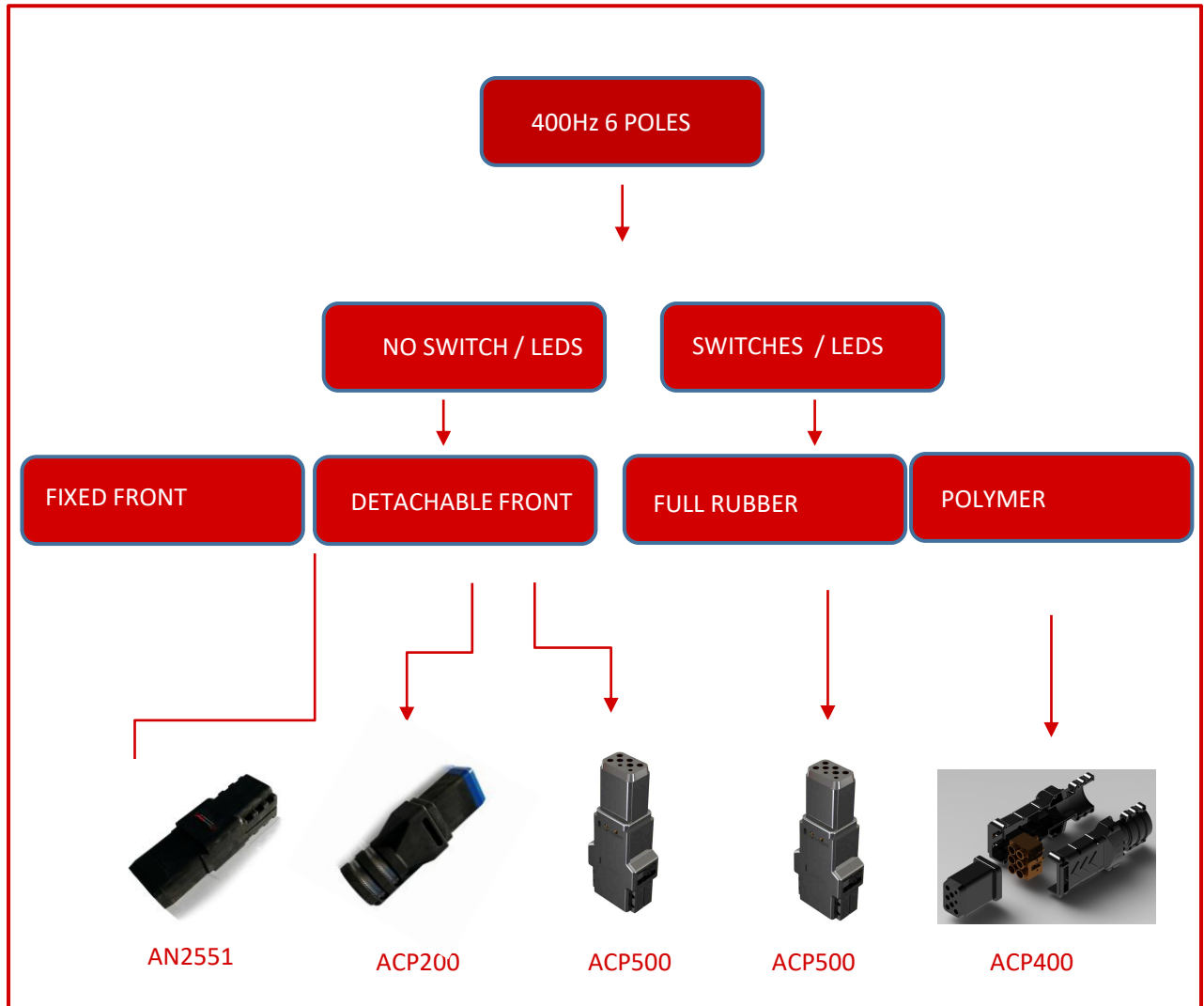


28VDC PLUG SELECTOR



**Connect with confidence**  
**Disconnect in safety**

400Hz PLUG SELECTOR



**Connect with confidence**  
**Disconnect in safety**





# Aircraftplugs®

Distributed by



**Aircraftplugs®**

Kruisboommolestraat 7/9  
Industrialpark strohof  
B-8800 Roeselare  
Belgium

Tel: +32.51.77.99.19  
Fax: +32.51.79.02.53  
AOG Hotline : +32.491.152.980

TVA BE 0816 768 803

The drawings, images, and information are the property of Aircraftplugs ®. Any publication, duplication, disclosure, or any use not authorized by Aircraftplugs ®. is prohibited. patented by DAVIATION BVBA