

GSE COUPLINGS



Aerocouplings®

Machining to perfection!



Industrialpark STROHOF
Kruisboommolenstraat 7/9
B-8800 Roeselare,

sales@aerocouplings.com
Tel +32.51.77.99.19

ADVANTAGES

AEROCOUPPLINGS® PNEUMATIC AIR START HOSE . AIR START STRAIGHT AIRCRAFT COUPLER WITH A ROUND HANDLE QUICKLY CONNECTS TO AND DISCONNECTS FROM AN AIRCRAFT. THE SELF-LOCKING DESIGN PROVIDES FOR VISUAL POSITIVE ENGAGEMENT WITH THE AIRCRAFT NIPPLE

Air Start Coupling assemblies are precision engineered for uncompromised performance.

CHROOM handgrips, anodized main body.



PART NUMBER	
ACC1001	Complete ASU couplings including all clamps
ACC1001-A	Clamps only
ACC1001-B	Main body anodized aluminium
ACC1001-C	Pair of handgrips chromom
ACC1001-D	Wire Mesh Screen Only
ACC1001-E	Screen locking clamp
ACC1001-F	Hose Barb Connection Inlets, 3-1/2" Hose Barb Connection Outlet
ACC1001-G	Nipple Connection Inlets, V-Band Flange Connection Outlet
ACC1001-H	Splice Tube Only
ACC1001-I	Rubber seal

DISCRIPTION

AEROCOUPPLINGS® PNEUMATIC AIR START test coupling, aluminum.



PART NUMBER

ACC1003

AEROCOUPPLINGS® PNEUMATIC AIR START test coupling

DISCRIPTION

AEROCOUPPLINGS® PNEUMATIC AIR START hoses with are without clamps., scuff cover jacket



PART NUMBER	
ACC1003HS-30	AEROCOUPPLINGS® PNEUMATIC AIR START hose 30 feet - 10 meter
ACC1003HS-40	AEROCOUPPLINGS® PNEUMATIC AIR START hose 40 feet - 13 meter
ACC1003HS-50	AEROCOUPPLINGS® PNEUMATIC AIR START hose 50 feet - 15 meter

ADVANTAGES

AEROCOUPPLINGS® hydraulic coupling.
Hydraulic ASU/CSD Oil Fill Coupling

Aluminum ballcage Size: -6 or -8



PART NUMBER	
AC2006	Hydraulic APU/CSD Oil Fill Coupling - Aluminum Ballcage - Size -6 (shown)
AC2001	Hydraulic APU/CSD Oil Fill Coupling - All Stainless Steel - Size -6 (shown)
AC2003	Oil Fill Coupling Plug/Dust Cap - For -6 Size Couplings (shown)
AC2012	Hydraulic APU/CSD Oil Overfill Coupling - Aluminum Ballcage - Size -8 (shown)
AC2002	Hydraulic APU/CSD Oil Overfill Coupling - All Stainless Steel - Size -8 (shown)
AC2004	Oil Overfill Coupling Plug/Dust Cap - For -8 Size Couplings (shown)
AC2007	Caution Hydraulic oil label
AC2008	Hydraulic fluid reservoir fill adapter 90 degrees
AC2009	Hydraulic oil pump 5L
AC2010	Hydraulic oil pump 10 L
AC2011	Hydraulic oil pump 20 L

ADVANTAGES

AEROCOUPPLINGS® Our 4-inch (10.16cm) general aviation waste coupler is expertly engineered for maximum strength and reliability. Say goodbye to spills, leakage, and parts that wear out quickly. The collar piece is made of aluminium – making it virtually indestructible. long-lasting and non-corrosive coupler.



PART NUMBER	
V1004	Lavatory Drain Coupling - Straight, Open - All Aluminum (shown)
V1005	4" Lavatory Drain Coupling - Straight, Open - Composite Collar with 1-Piece Aluminum Ballcage
V1006	All Composite Drain Coupling
V1007	Lavatory Drain Coupling - Straight, Open - Composite Collar yellow
V1008	Lavatory Drain Coupling - Straight, Open - Composite Collar orange
V1004-A	Collar only aluminium
V1004-B	Collar only Composite yellow
V1004-C	Collar only Composite orange
V1004-D	Mainbody anodized aluminium
V1004-E	Locking ball cage ring.

ADVANTAGES

AEROCOUPPLINGS® Our 4-inch (10.16cm) general aviation waste coupler is expertly engineered for maximum strength and reliability. Say goodbye to spills, leakage, and parts that wear out quickly. The collar piece is made of aluminium – making it virtually indestructible. long-lasting and non-corrosive coupler.



PART NUMBER	
V1004	Lavatory Drain Coupling - Straight, Open - All Aluminum (shown)
V1005	4" Lavatory Drain Coupling - Straight, Open - Composite Collar with 1-Piece Aluminum Ballcage
V1006	All Composite Drain Coupling
V1007	Lavatory Drain Coupling - Straight, Open - Composite Collar yellow
V1008	Lavatory Drain Coupling - Straight, Open - Composite Collar orange
V1004-A	Collar only aluminium
V1004-B	Collar only Composite yellow
V1004-C	Collar only Composite orange
V1004-D	Mainbody anodized aluminium
V1004-E	Locking ball cage ring.
V1004-F	Sealing

ADVANTAGES

AEROCOUPPLINGS® 4" (10.16 cm) GA-coupler or Y-Coupler Stow Flange Anodized GOLD



PART NUMBER

ACC1001STOW

4" (10.16 cm) GA-coupler or Y-Coupler Stow Flange Anodized GOLD

ADVANTAGES

AEROCOUPPLINGS® 4" (10.16 cm) Plug-Stow
4" male aircraft nipple with 2 & 5/16" mtg holes for GA or Y Coupler, Anodized Aluminum. Bolt on style



PART NUMBER	
ACC1001PLUG	4" (10.16 cm) Plug-Stow 4" male aircraft nipple with 2 & 5/16" mtg holes for GA or Y Coupler, Anodized Aluminum. Bolt on style

ADVANTAGES

AEROCOUPPLINGS® 4-inch (10.16 cm) lavatory cap. Used for closed waste equipped units



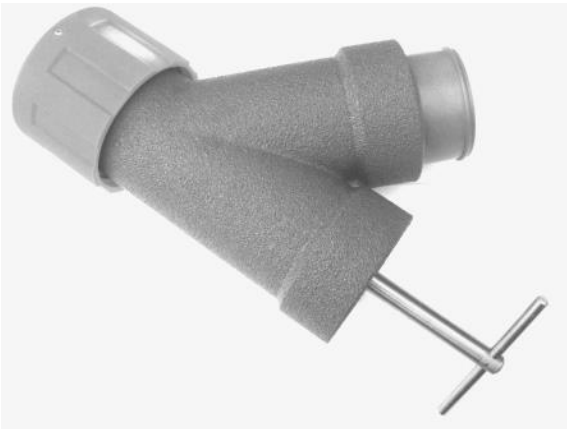
PART NUMBER

ACC1001CAP

4-inch (10.16 cm) lavatory cap. Used for closed waste equipped units

ADVANTAGES

AEROCOUPPLINGS® Aircraft Lavatory Dump/Waste Wye Coupler (Y-type) with GA Nipple Adapter. Allows wye coupler to hook to straight coupler for in-line donut removal



PART NUMBER

ACC1001_Y

Aircraft Lavatory Dump/Waste Wye Coupler (Y-type) with GA Nipple Adapter. Allows wye coupler to hook to straight coupler for in-line donut removal

ADVANTAGES

AEROCOUPPLINGS® 1" Lavatory Service Fill & Flush Cap - Hourglass Collar



PART NUMBER

AC19017

AEROCOUPPLINGS® 1" Lavatory Service Fill & Flush Cap - Hourglass Collar

ADVANTAGES

AEROCOUPINGS® 1" Lavatory Service Fill & Flush Cap - Standard Collar



PART NUMBER

AC19018

1" Lavatory Service Fill & Flush Cap - Standard Collar

ADVANTAGES

AEROCOUPPLINGS® 1" Lavatory Service Fill & Flush Cap - Tang Collar



PART NUMBER	
AC19022	1" Lavatory Service Fill & Flush Cap - Tang Collar

ADVANTAGES

AEROCOUPPLINGS® 1" Lavatory Service Fill & Flush Cap - Lever Operated Design



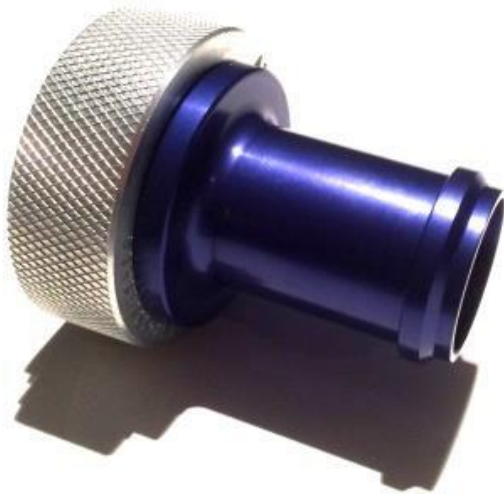
PART NUMBER

ACC1001

AEROCOUPPLINGS® 1" Lavatory Service Fill & Flush Cap - Lever Operated Design

ADVANTAGES

AEROCOUPPLINGS® 1" Lavatory Fill & Flush Coupling - Standard Collar



PART NUMBER	
ACC1001	1" Lavatory Fill & Flush Coupling - Standard Collar

ADVANTAGES

AEROCOUPINGS® 1" Lavatory Fill & Flush Coupling - Extended Collar

PART NUMBER

ACC1001

1" Lavatory Fill & Flush Coupling - Extended Colla



ADVANTAGES

AEROCOUPINGS® 1" Lavatory Fill & Flush Coupling Plug/Dust Cap and Chain, Super Stretch Collar with -16 Hose Bib Termination

PART NUMBER	
AC19042	1" Lavatory Fill & Flush Coupling Plug/Dust Cap and Chain, Super Stretch Collar with -16 Hose Bib Termination



ADVANTAGES

AEROCOUPPLINGS® 1" Lavatory Service Breakaway Coupling - Reconnectable, 100 lb. Break Rated



PART NUMBER

AC19044

1" Lavatory Service Breakaway Coupling - Reconnectable, 100 lb. Break Rated

ADVANTAGES

AEROCOUPPLINGS® 1" Lavatory Service Fill & Flush Nipple - Internal NPT Termination, 1-Piece



PART NUMBER

ACC1001NPT

1" Lavatory Service Fill & Flush Nipple - Internal NPT Termination, 1-Piece

ADVANTAGES

AEROCOUPPLINGS® 1" Lavatory Service Fill & Flush Nipple - External NPT Termination, 1-Piece



PART NUMBER

ACC1001NPT

1" Lavatory Service Fill & Flush Nipple - External NPT Termination, 1-Piece

ADVANTAGES

AEROCOUPPLINGS® 1" Standard Lavatory Service Plug/Dust Cap (shown)



PART NUMBER

ACC1001DCP

1" Standard Lavatory Service Plug/Dust Cap (shown)

ADVANTAGES

AEROCOUPPLINGS® 3/4" Potable Water Fill Coupling/Dust Plug/Drag Cushion Assembly

PART NUMBER

ACC1001PDC

3/4" Potable Water Fill Coupling/Dust Plug/Drag Cushion Assembly



ADVANTAGES

AEROCOUPINGS® 4" Lavatory Drain Cap Assembly - Flat Cover

PART NUMBER

ACC1001LDCA

4" Lavatory Drain Cap Assembly - Flat Cover



ADVANTAGES

AEROCOUPPLINGS® 4" Lavatory Service Drain Plug



PART NUMBER	
ACC1001-dpb	4" Lavatory Service Drain Plug

ADVANTAGES

AEROCOUPPLINGS® 1" Lavatory Fill & Flush Coupling - Long Barrel Collar



PART NUMBER

ACC1001FFC

1" Lavatory Fill & Flush Coupling - Long Barrel Collar

ADVANTAGES

AEROCOUPPLINGS® Potable Water Fill Coupling with Super Stretch Collar with Plug/Dust Cap/Drag Cushion and Stainless Steel Ball Shut-off Valve (shown)

PART NUMBER	
ACC1001LDRC	Potable Water Fill Coupling with Super Stretch Collar with Plug/Dust Cap/Drag Cushion and Stainless Steel Ball Shut-off Valve (shown)



ADVANTAGES

AEROCOUPINGS® Plug/Dust Cap/Drag



PART NUMBER	
ACC1001	Plug/Dust Cap/Drag
ACC1001-A	Clamps only
ACC1001-B	Main body aluminium
ACC1001-C	Pair of handgrips aluminium
ACC1001-D	Wire Mesh Screen Only
ACC1001-E	Screen locking clamps
ACC1001-F	Hose Barb Connection Inlets, 3-1/2" Hose Barb Connection Outlet
ACC1001-G	Nipple Connection Inlets, V-Band Flange Connection Outlet
ACC1001-H	Splice Tube Only
ACC1001-I	Rubber cushion

ADVANTAGES

AEROCOUPPLINGS® SWIFEL TYPE PCA 8-Inch



PART NUMBER

ACCPCA1001

SWIFEL TYPE PCA 8-Inch

ADVANTAGES

AEROCOUPINGS® SWIFEL TYPE PCA 8-Inch black



PART NUMBER

ACCPCA1001B

SWIFEL TYPE PCA 8-Inch

ADVANTAGES

AEROCOUPINGS® PCA replacement sealings



PART NUMBER

ACCPCA1005

PCA replacement sealings

ADVANTAGES

AEROCOUPPLINGS® PCA 14 inch



PART NUMBER

ACCPCA1009

PCA 14 inch

ADVANTAGES

AEROCOUPPLINGS® PCA tube protection rail

PART NUMBER	
ACC1001PCAR	PCA tube protection rail



ADVANTAGES

AEROCOUPINGS® Military PCA

PART NUMBER	
ACC1001MPCA	Military PCA's



ADVANTAGES

AEROCOUPINGS® 12 Inch PCA

PART NUMBER	
ACC1001PCA	12 inch PCA

